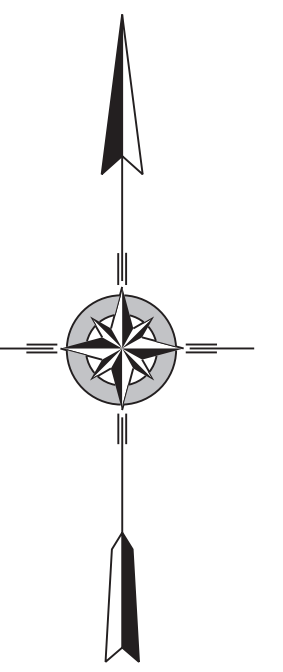
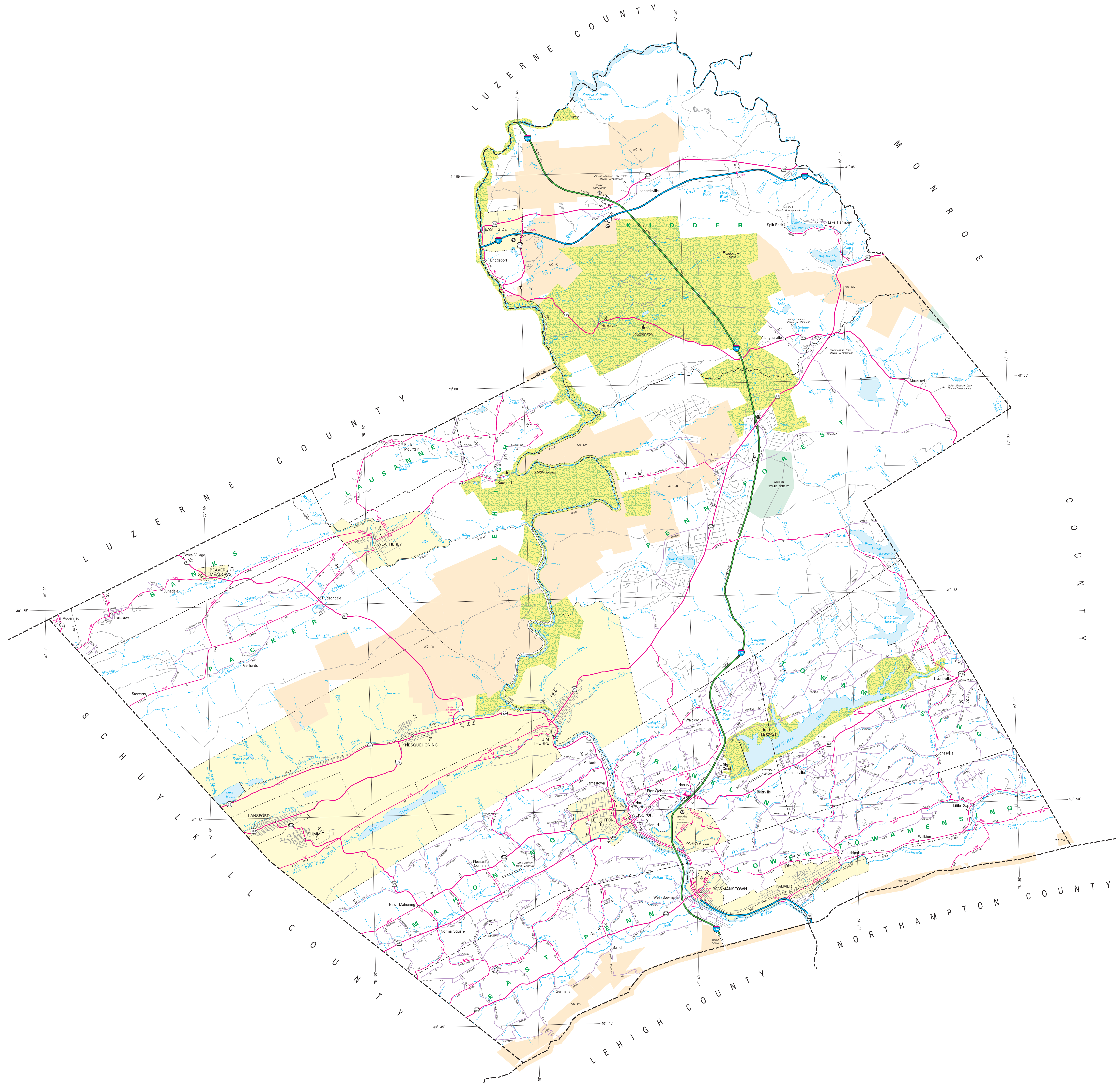


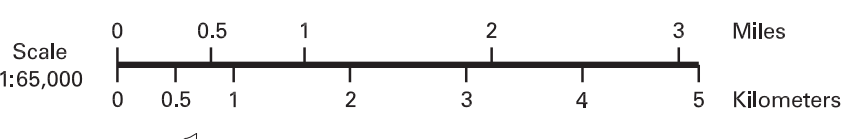
LEGEND

FULLY CONTROLLED ACCESS HIGHWAY	
MULTILANE HIGHWAY	
PAVING RESERVE	
REMAINING STATE ROAD AND EASEMENT	
STATE MAINTAINED SPUR	
TOWNSHIP ROAD	
TOWNSHIP ROAD (PENDING IMPROVEMENT)	
LOCAL ROAD	
INDUSTRIAL INTERCHANGE NUMBER	
INDUSTRIAL TRAFFIC ROUTE	
UNIMPROVED TRAFFIC ROUTE	
PENNSYLVANIA TRAFFIC ROUTE	
BIKEWAY OR SPUR	
BIKEWAY ABANDONED TRACK REMAINS	
STATE LINE	
COUNTY LINE	
TOWNSHIP LINE	
INCORPORATED CITY	
INCORPORATED BOROUGH	
STATE CAPITAL	
COUNTY SEAT	
OTHER COMMUNITIES	
CITY OF UNIVERSITY	
STATE POLICE FACILITY	
COMETRY	
STATE ABANDONED HISTORIC PROPERTY	
FEDERAL STATE HISTORIC	
POWELL FACILITY	
PORT OF WHEELING	
HORSE RACE TRACK	
HELIPORT	
RACE TRAIL AND CONCEPT FACILITY	
WELDING CENTER AND CONCEPT FACILITY	
STATE TRAIL	
STATE FOREST MEDICAL AREA	
STATE FOREST TRAIL AREA	
FEDERAL RECREATION SITE	
STATE PARK LAND - HEADQUARTERS	
STATE GAME LAND AND NUMBER	
STATE AND FEDERAL FOREST LAND	
FEDERAL PARK, RECREATION LAND	
FEDERAL RESERVATION	



2024
GENERAL HIGHWAY MAP
CARBON COUNTY
PENNSYLVANIA

PREPARED BY THE
PENNSYLVANIA DEPARTMENT OF TRANSPORTATION
BUREAU OF PLANNING AND RESEARCH
GEOGRAPHIC INFORMATION DIVISION
IN COOPERATION WITH THE
U.S. DEPARTMENT OF TRANSPORTATION
FEDERAL HIGHWAY ADMINISTRATION



POPULATION OF COUNTY (2020 Census) 44,740
AREA OF COUNTY (SQ. MI.) 428
SQ. MILEAGE 428

COPIES OF THIS MAP ARE AVAILABLE AT NOMINAL COST
CONTACT
PENNSYLVANIA DEPARTMENT OF TRANSPORTATION
SALES STORE
P.O. BOX 460
HARRISBURG, PENNSYLVANIA 17105 - 3451
TELEPHONE: (717) 771-0746

USERS NOTING ERRORS OR OMISSIONS ON THIS MAP
ARE URGED TO REPORT THEM TO:
PENNSYLVANIA DEPARTMENT OF TRANSPORTATION
BUREAU OF PLANNING & RESEARCH
GEOGRAPHIC INFORMATION DIVISION
P.O. BOX 460
HARRISBURG, PENNSYLVANIA 17105 - 3456

E-MAIL: gis@dot.state.pa.us
COPYRIGHT © COMMONWEALTH OF PENNSYLVANIA
ALL RIGHTS RESERVED