

PENNSYLVANIA HISTORIC RESOURCE SURVEY FORM
 BUREAU FOR HISTORIC PRESERVATION Box 1026
 PA HISTORICAL & MUSEUM COMMISSION Harrisburg, PA 17120

7. Local survey organization
 Philadelphia Historical Commission

8. property owners name and address
 School District of Philadelphia
 21st & Winter Streets
 Philadelphia, Pennsylvania 19103

9. tax parcel number / other number
 886087500

10. U.T.M. zone **18** easting **481710810**
 2 acres
 northing **4411815310**
 usgs sheet: Philadelphia

11. status (other surveys, lists etc.)
 PHRS (8-19-1980)

12. classification
 site () structure () object ()
 building () Thematic
 in N.R. district yes () no ()

13. date(s) (how determined)
 1906-1908
 14. period.
 1906-1908

15. style, design or folk type
 Colonial Revival

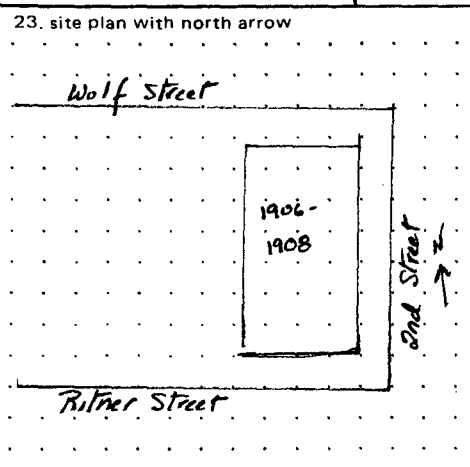
19. original use School
 20. present use School

16. architect or engineer
 H. deCourcy Richards

17. contractor or builder
 Charles McCaul Comp.

18. primary building mat./construction
 Brick with granite trimmings

21. condition Good
 22. integrity Good



BLACK AND WHITE PRINT(S)
 3 1/2" x 5" enlargement or medium format contact
 note location of negative in block 24.

24. photo notation

25. file/location

26. brief description (note unusual features, integrity, environment, threats and associated buildings)
 See reverse side

(continue on back if necessary)

27. history, significance and/or background
 See reverse side

(continue on back if necessary)

28. sources of information
 See reverse side

29. prepared by:
 Jefferson M. Moak
 30. date: 5-25-87
 revision(s)

1. County Philadelphia
 2. municipality Philadelphia
 3. street address or specific location 200 Wolf Street
 4. survey code
 5. present name George Sharswood School
 6. other name (historic name if any) N/A

3. ADDRESS: Wolf Street, 200

5. NAME: Sharswood, George, School

6. FORMER NAME:

13. DATES: 1906-1908

ADDITIONS: 1915

DESCRIPTION: A 3-story, seven-register, brick school with projecting end registers. The end registers contain four openings, the second registers from the end each contain a single opening with an entrance on the ground level with stone entablature and the stair tower within. The openings are located at the between floor levels with a large arched opening on the second/third floor landing. The center three registers each contain three openings with a window arrangement of 2-1-2. A stone dripcourse runs above the raised basement. A stone beltcourse separates the first and second floors. Stone sills appear below the openings on the third floor. A large stone cornice sits above the third floor and below a brick and stone parapet. The north and south elevations have three registers: the right and left with large stone panels on the second and third floors and no openings except at the ground level. The center projecting register has three openings with the window arrangement 1-2-1.

HISTORY/SIGN.: After the school reforms of 1905, the School District employed a full-time architect and adopted new standards for school construction. The Charles W. Henry School, the Thomas Buchanan Read School and the George Sharswood School, constructed at the same time, were the first buildings built by the School District to be of fireproof construction. The Henry and Read Schools were small 6-classroom buildings. The Sharswood School, the only one constructed from School Board Type Number 111, was originally three times as large, with 24 classrooms. In 1915, Richards designed several additions which increased the total number of classrooms to 42. P. J. Hurley was the contractor for the additions.

National Register Criteria: C, Architecture

Boundary Justification: The nominated property contains the contributing building and all the historically associated land.

28. SOURCES: Edmunds, Public School Buildings of Philadelphia, 1900-1907
School Board, "List of Buildings Under Contract"
Building Permit 1915 # 2046

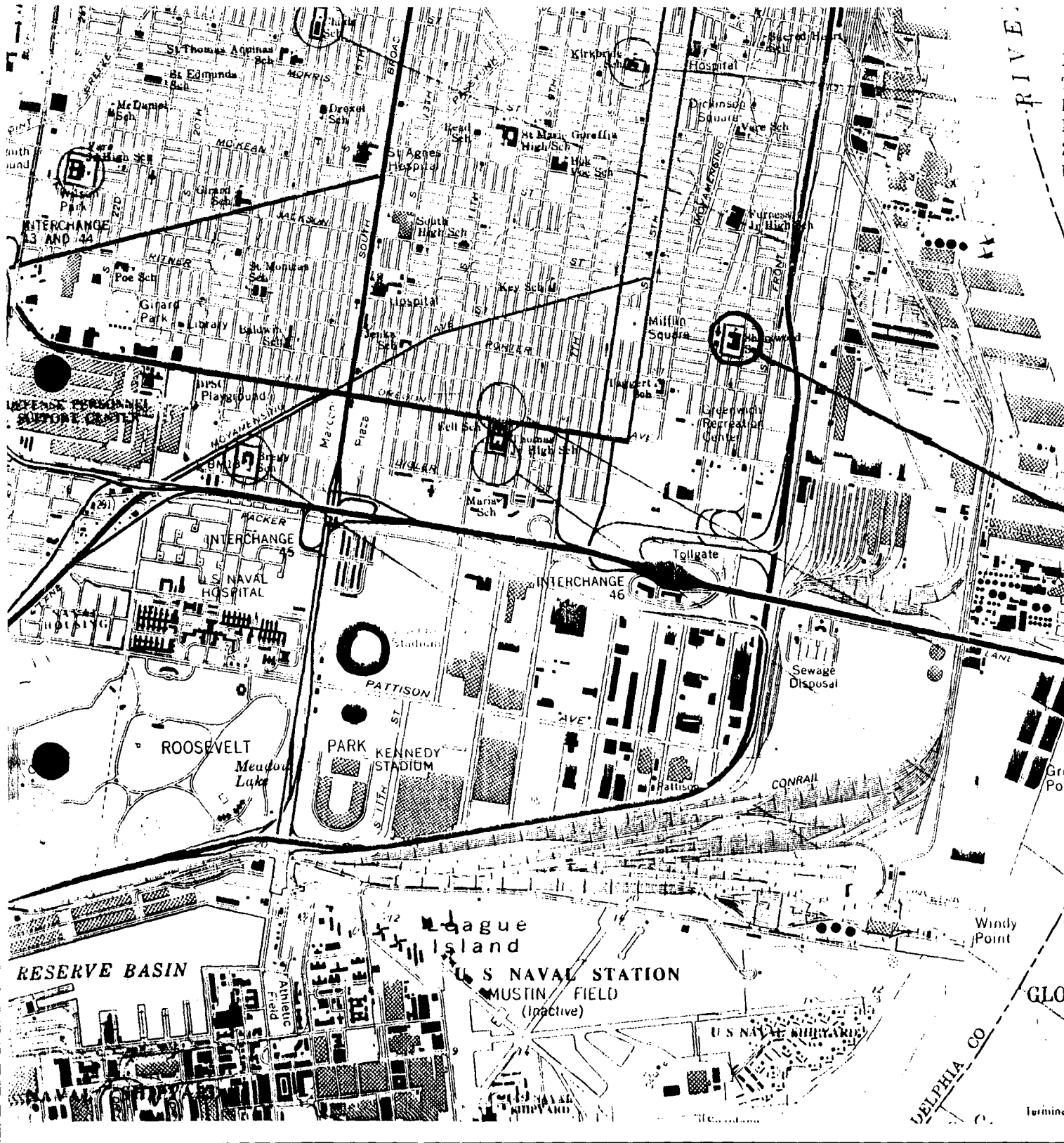
EVALUATION: Owing to its importance in school design, this building should be included as part of the Philadelphia Public Schools Thematic Nomination.

There is one contributing building on the nominated property.

Verbal boundary: the nominated property is tax parcel #886087500.

EVALUATION

EVALUATOR(S)

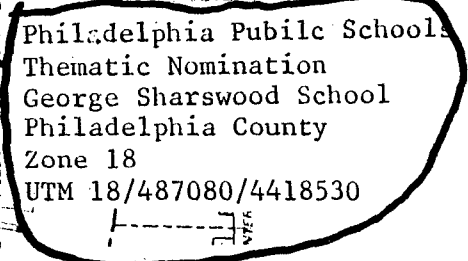


UTM 18/486000/4420160

Philadelphia Public Schools
Thematic Nomination
Eliza Butler Kirkbride School
Philadelphia County
Zone 18
UTM 18/486630/4419790



Philadelphia Public Schools
Thematic Nomination
George Childs School
Philadelphia County
Zone 18
UTM 18/485200/4419940



Philadelphia Public Schools
Thematic Nomination
D. Newlin Fell School
Philadelphia County
Zone 18
UTM 18/487080/4418530

Philadelphia Public Schools
Thematic Nomination
George Thomas School
Philadelphia County
Zone 18
UTM 18/486000/4418160

Philadelphia Public Schools
Thematic Nomination
George Thomas School
Philadelphia County
Zone 18
UTM 18/486240/4419150

Philadelphia Public Schools
Thematic Nomination
F. Amadee Bregy
Philadelphia County
Zone 18