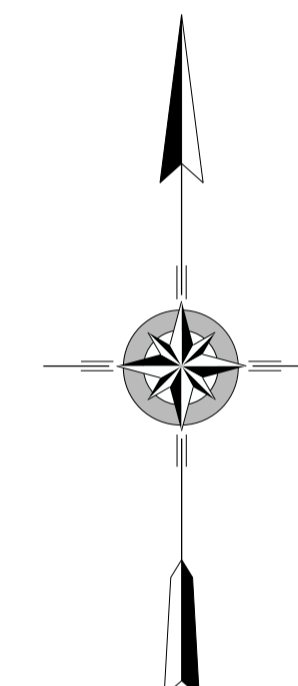
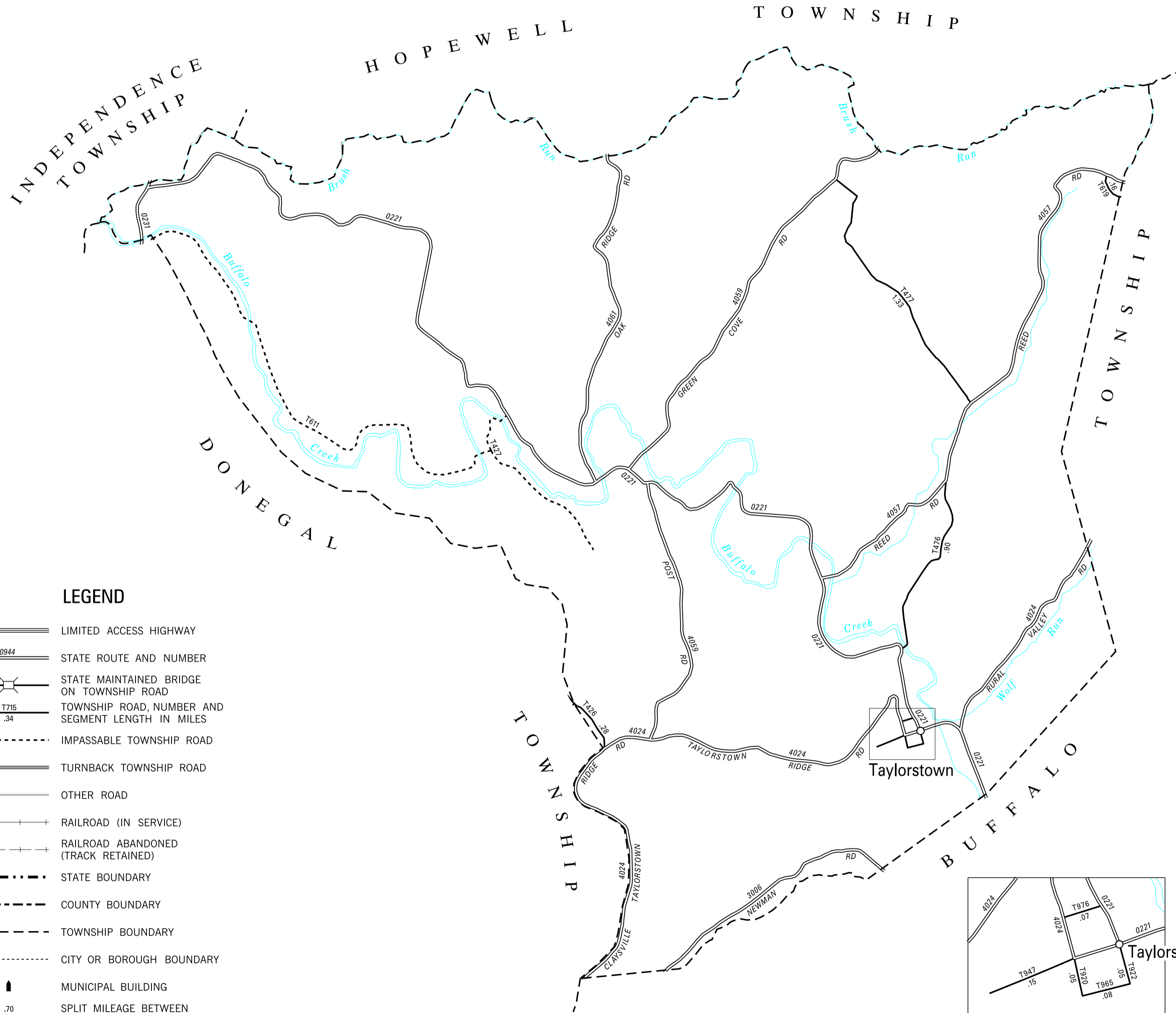


TOTAL MILES	
Township Road System	3.07
State Highway System	19.69
Total	22.76

426 COLBY YOUNG RD
 476 WALKER HILL RD
 477 NEELY SCHOOL RD
 619 CARLISLE RD
 920 SECOND ST
 922 FIRST ST
 947 DEAD END HILL RD
 965 SOUTH ALLEY
 976 NORTH ALLEY

COPIES OF THIS MAP ARE AVAILABLE AT NOMINAL COST
 CONTACT:

PENNSYLVANIA DEPARTMENT OF TRANSPORTATION
 SALES STORE
 P.O. BOX 3451
 HARRISBURG, PENNSYLVANIA 17105-3451
 TELEPHONE: (717)787-6746



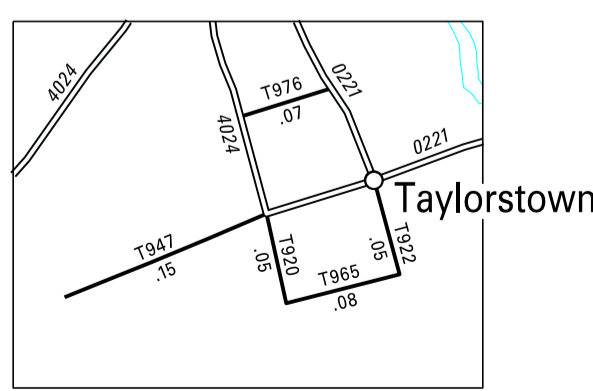
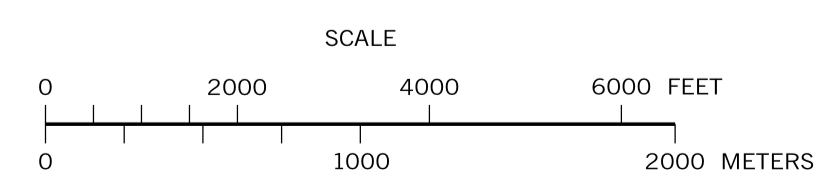
BLAINE SECOND CLASS TOWNSHIP MAP WASHINGTON COUNTY

PREPARED BY THE
PENNSYLVANIA DEPARTMENT OF TRANSPORTATION
 BUREAU OF PLANNING AND RESEARCH
 GEOGRAPHIC INFORMATION DIVISION

IN COOPERATION WITH THE
U.S. DEPARTMENT OF TRANSPORTATION
 FEDERAL HIGHWAY ADMINISTRATION

MUNICIPAL CODE 62 202

THIS MAP IS PUBLISHED AS A SUPPLEMENTAL
 DOCUMENTATION OF LIQUID FUELS TAX FUND MILEAGES
 REVISED PER FORM 990 DATED 8-28-19



3:1

- ### LEGEND
- LIMITED ACCESS HIGHWAY
 - STATE ROUTE AND NUMBER
 - STATE MAINTAINED BRIDGE ON TOWNSHIP ROAD
 - TOWNSHIP ROAD, NUMBER AND SEGMENT LENGTH IN MILES
 - IMPASSABLE TOWNSHIP ROAD
 - TURNBACK TOWNSHIP ROAD
 - OTHER ROAD
 - RAILROAD (IN SERVICE)
 - RAILROAD ABANDONED (TRACK RETAINED)
 - STATE BOUNDARY
 - COUNTY BOUNDARY
 - TOWNSHIP BOUNDARY
 - CITY OR BOROUGH BOUNDARY
 - MUNICIPAL BUILDING
 - SPLIT MILEAGE BETWEEN MUNICIPALITIES

(CREATED BY RPL 6-28-02) (REVISED 1-6-20)