

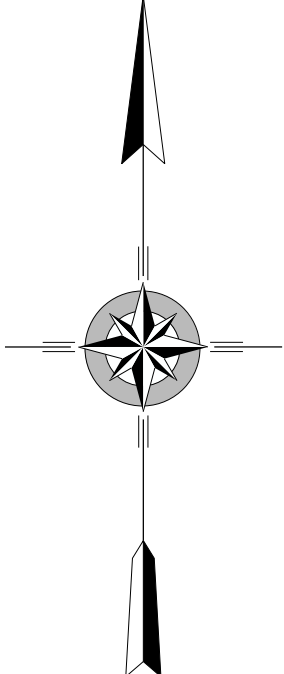
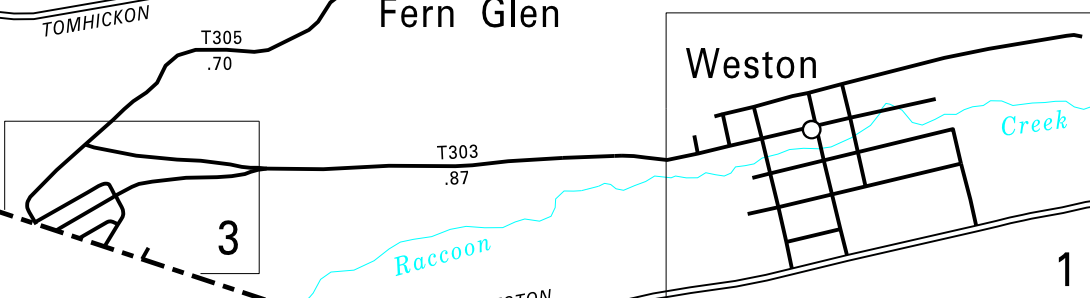
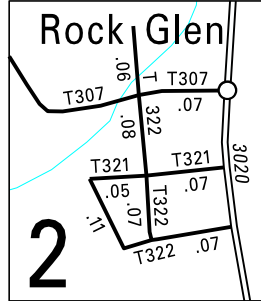
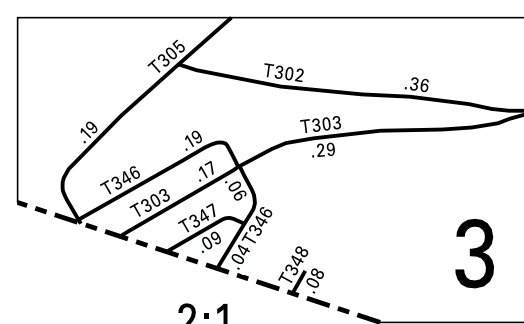
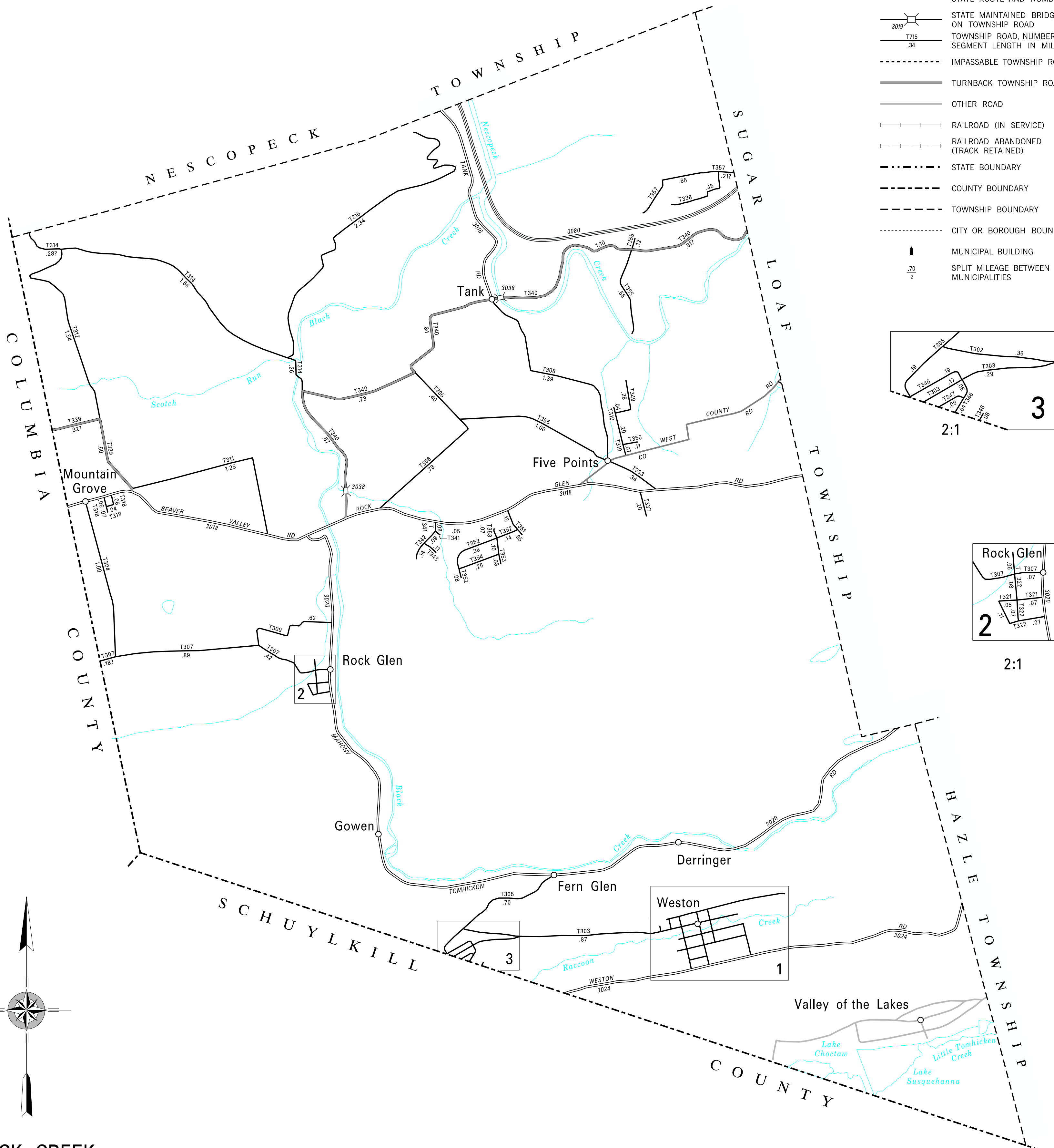
302 NUREMBERG BYPASS
 303 HAZLE ST
 304 SEIWELL LA
 305 NUREMBERG MOUNTAIN RD
 306 GOLF COURSE RD
 307 MOUNTAIN ST
 308 MOUNTAIN LAUREL TRAIL
 309 PARK ST
 310 WINDFIELD VILLAGE RD
 311 BOULEVARD RD
 312 CHICKS LA
 314 TOWER RD
 316 HILLTOP DR
 318 MAPLE ST
 321 FALLS ST
 322 PINE ST
 323 TOP ST
 324 MARKET ST
 325 MAIN ST
 327 CENTER ST
 328 SIGMOND ST
 329 DERRINGER RD
 330 LINE ST
 331 GROVE ST
 333 RED FOX LA
 337 GATEWAY RD
 338 LAROCK RD
 339 SCOTCH VALLEY RD
 340 CEDARHEAD RD
 341 BUCK RUN DR
 342 MACINTOSH RD
 343 DELICIOUS DR
 344 SPRING ST
 345 WALNUT ST
 346 PINEAPPLE ST
 347 BRUSH ST
 348 STAFFER AV
 349 HICKORY RD
 350 WINDFIELD RD
 351 ALEXANDER ST
 352 HANNA ST
 353 DAWN ST
 354 TAMMY LA
 355 GROSS RD
 356 CHURCH RD
 357 RED ROCK RD

COPIES OF THIS MAP ARE AVAILABLE AT NOMINAL COST
 CONTACT:
 PENNSYLVANIA DEPARTMENT OF TRANSPORTATION
 SALES STORE
 P.O. BOX 3451
 HARRISBURG, PENNSYLVANIA 17105-3451
 TELEPHONE: (717)787-6746

POPULATION 1,909
 (2020 Census)

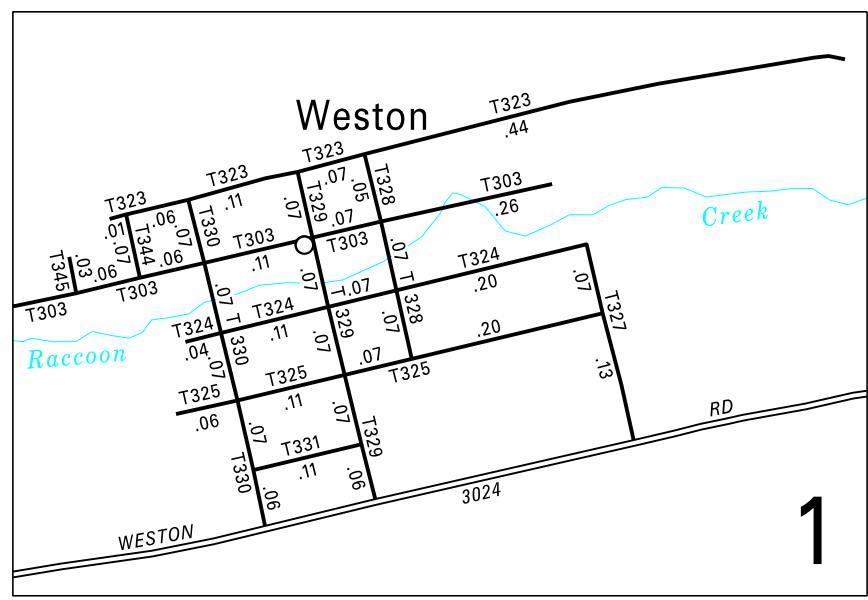
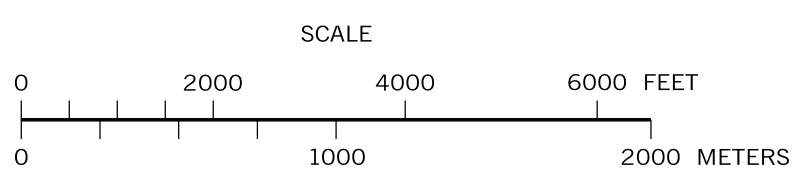
LEGEND

- LIMITED ACCESS HIGHWAY
- STATE ROUTE AND NUMBER
- STATE MAINTAINED BRIDGE ON TOWNSHIP ROAD
- TOWNSHIP ROAD, NUMBER AND SEGMENT LENGTH IN MILES
- IMPASSABLE TOWNSHIP ROAD
- TURNBACK TOWNSHIP ROAD
- OTHER ROAD
- RAILROAD (IN SERVICE)
- RAILROAD ABANDONED (TRACK RETAINED)
- STATE BOUNDARY
- COUNTY BOUNDARY
- TOWNSHIP BOUNDARY
- CITY OR BOROUGH BOUNDARY
- MUNICIPAL BUILDING
- SPLIT MILEAGE BETWEEN MUNICIPALITIES



**BLACK CREEK
 SECOND CLASS TOWNSHIP MAP
 LUZERNE COUNTY**

PREPARED BY THE
PENNSYLVANIA DEPARTMENT OF TRANSPORTATION
 BUREAU OF PLANNING AND RESEARCH
 GEOGRAPHIC INFORMATION DIVISION
 IN COOPERATION WITH THE
U.S. DEPARTMENT OF TRANSPORTATION
 FEDERAL HIGHWAY ADMINISTRATION
 MUNICIPAL CODE 40 202
 THIS MAP IS PUBLISHED AS A SUPPLEMENTAL
 DOCUMENTATION OF LIQUID FUELS TAX FUND MILEAGES
 REVISED PER FORM 990 DATED 6-13-23



TOTAL MILES	
Township Road System	31.40*
State Highway System	16.59
Total	47.99

* Includes ACT 32 Turnback Mileage of 5.17