

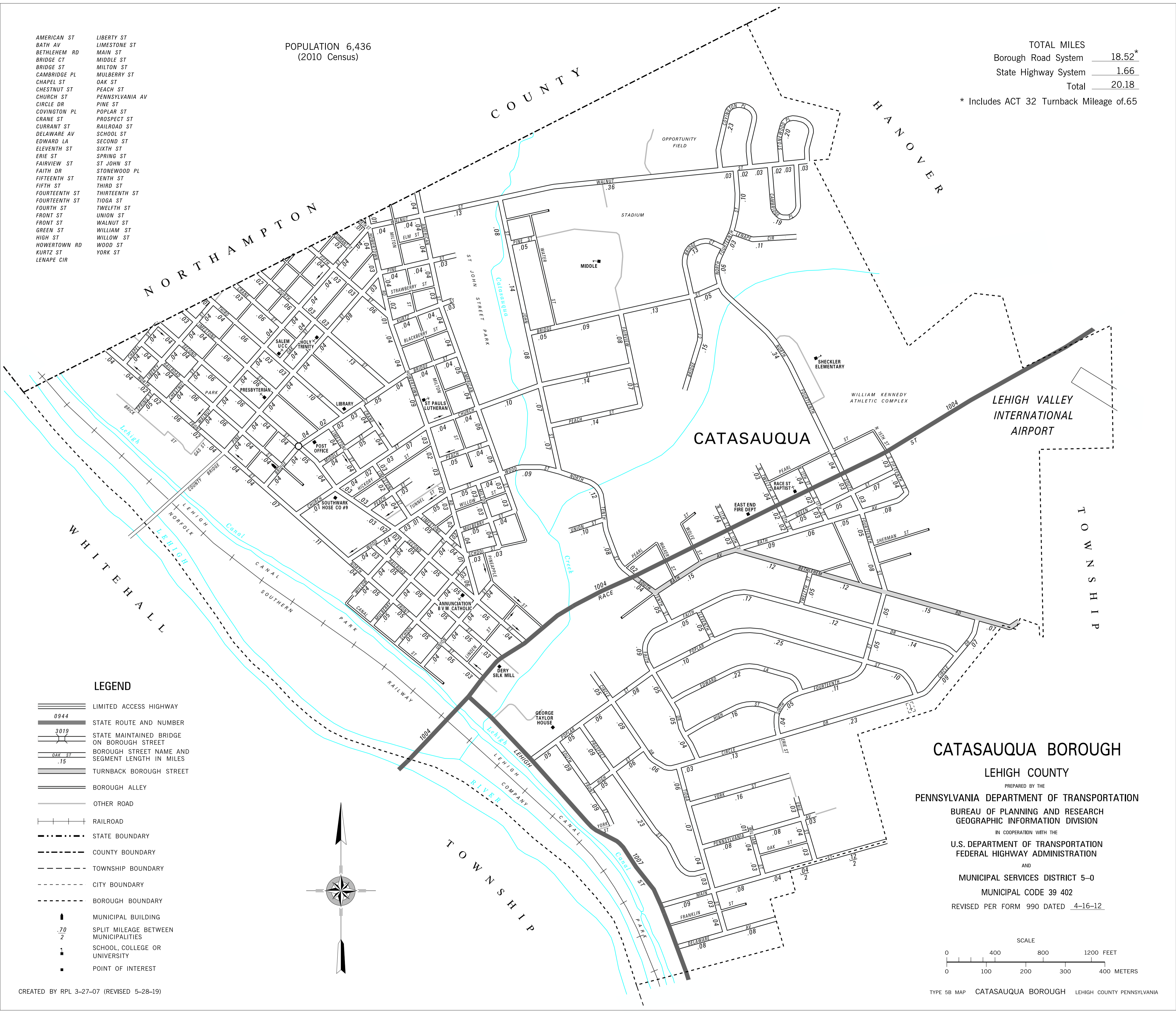
AMERICAN ST
BATH AV
BETHLEHEM RD
BRIDGE CT
BRIDGE ST
CAMBRIDGE PL
CHAPEL ST
CHESTNUT ST
CHURCH ST
CIRCLE DR
COVINGTON PL
CRANE ST
CURRANT ST
DELAWARE AV
EDWARD LA
ELEVENTH ST
ERIE ST
FAIRVIEW ST
FAITH DR
FIFTEENTH ST
FIFTH ST
FOURTEENTH ST
FOURTEENTH ST
FOURTH ST
FRONT ST
FRONT ST
GREEN ST
HIGH ST
HOWERTOWN RD
KURTZ ST
LENAPE CIR

LIBERTY ST
LIMESTONE ST
MAIN ST
MIDDLE ST
MILTON ST
MULBERRY ST
OAK ST
PEACH ST
PENNSYLVANIA AV
PINE ST
POPLAR ST
PROSPECT ST
RAILROAD ST
SCHOOL ST
SECOND ST
SIXTH ST
SPRING ST
ST JOHN ST
STONEMOOD PL
TENTH ST
THIRD ST
THIRTEENTH ST
TIOGA ST
TWELFTH ST
UNION ST
WALNUT ST
WILLIAM ST
WILLOW ST
WOOD ST
YORK ST

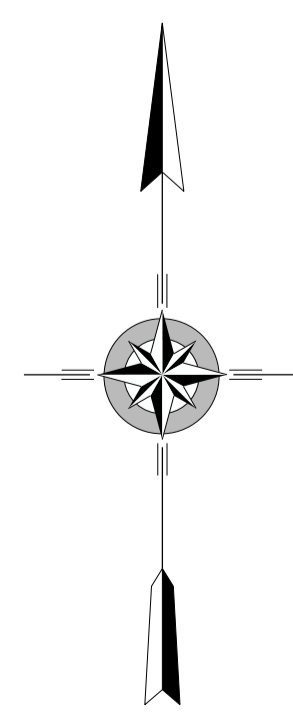
POPULATION 6,436
(2010 Census)

TOTAL MILES
Borough Road System 18.52*
State Highway System 1.66
Total 20.18

* Includes ACT 32 Turnback Mileage of .65



- LEGEND**
- LIMITED ACCESS HIGHWAY
 - STATE ROUTE AND NUMBER
 - STATE MAINTAINED BRIDGE ON BOROUGH STREET
 - BOROUGH STREET NAME AND SEGMENT LENGTH IN MILES
 - TURNBACK BOROUGH STREET
 - BOROUGH ALLEY
 - OTHER ROAD
 - RAILROAD
 - STATE BOUNDARY
 - COUNTY BOUNDARY
 - TOWNSHIP BOUNDARY
 - CITY BOUNDARY
 - BOROUGH BOUNDARY
 - MUNICIPAL BUILDING
 - SPLIT MILEAGE BETWEEN MUNICIPALITIES
 - SCHOOL, COLLEGE OR UNIVERSITY
 - POINT OF INTEREST



CATASAUQUA BOROUGH
LEHIGH COUNTY
PREPARED BY THE
PENNSYLVANIA DEPARTMENT OF TRANSPORTATION
BUREAU OF PLANNING AND RESEARCH
GEOGRAPHIC INFORMATION DIVISION
IN COOPERATION WITH THE
U.S. DEPARTMENT OF TRANSPORTATION
FEDERAL HIGHWAY ADMINISTRATION
AND
MUNICIPAL SERVICES DISTRICT 5-0
MUNICIPAL CODE 39 402
REVISED PER FORM 990 DATED 4-16-12

