

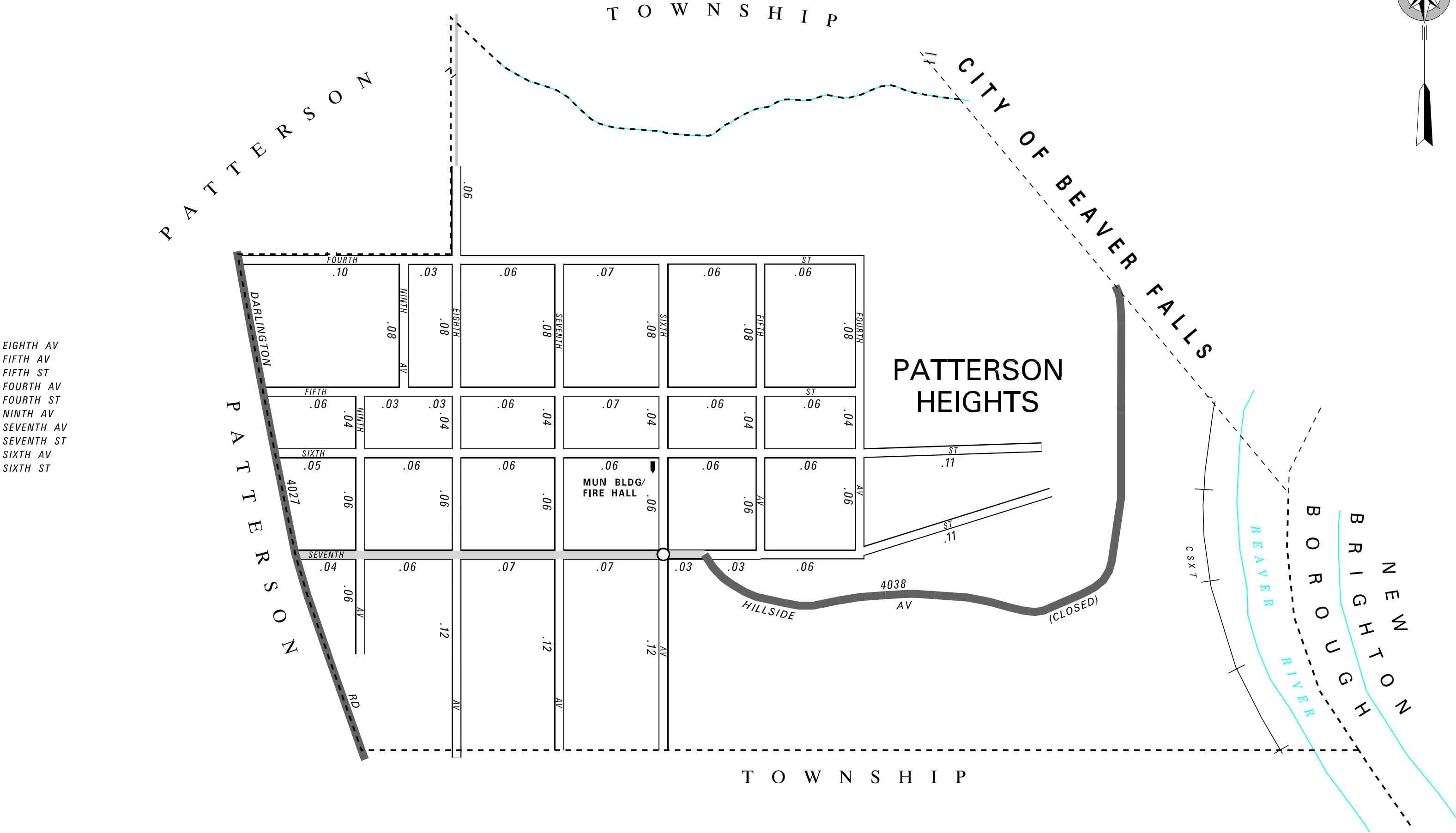
TOTAL MILES	
Borough Road System	3.24 *
State Highway System	0.17
Total	3.41

* Includes ACT 32 Turnback Mileage of 0.27

POPULATION 636
(2010 Census)

LEGEND

- LIMITED ACCESS HIGHWAY
- STATE ROUTE AND NUMBER
- STATE MAINTAINED BRIDGE ON BOROUGH STREET
- BOROUGH STREET NAME AND SEGMENT LENGTH IN MILES
- TURNBACK BOROUGH STREET
- BOROUGH ALLEY
- OTHER ROAD
- RAILROAD
- STATE BOUNDARY
- COUNTY BOUNDARY
- TOWNSHIP BOUNDARY
- CITY BOUNDARY
- BOROUGH BOUNDARY
- MUNICIPAL BUILDING
- SPLIT MILEAGE BETWEEN MUNICIPALITIES
- SCHOOL, COLLEGE OR UNIVERSITY
- POINT OF INTEREST



PATTERSON HEIGHTS BOROUGH

BEAVER COUNTY

PREPARED BY THE
PENNSYLVANIA DEPARTMENT OF TRANSPORTATION
BUREAU OF PLANNING AND RESEARCH
GEOGRAPHIC INFORMATION DIVISION
IN COOPERATION WITH THE
U.S. DEPARTMENT OF TRANSPORTATION
FEDERAL HIGHWAY ADMINISTRATION
AND
MUNICIPAL SERVICES DISTRICT 11-0
MUNICIPAL CODE 04 425
REVISED PER FORM 990 DATED 7-13-07

