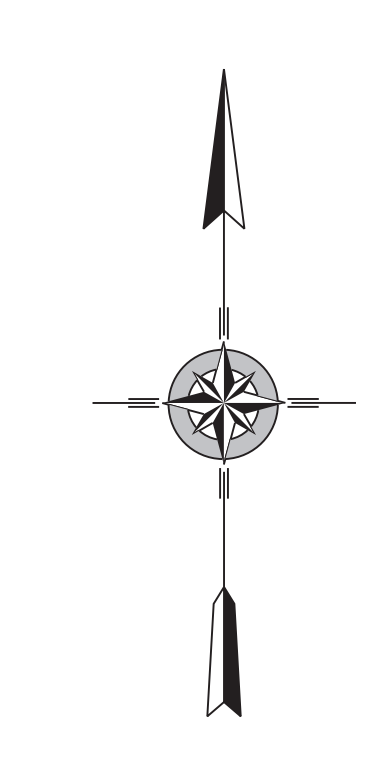
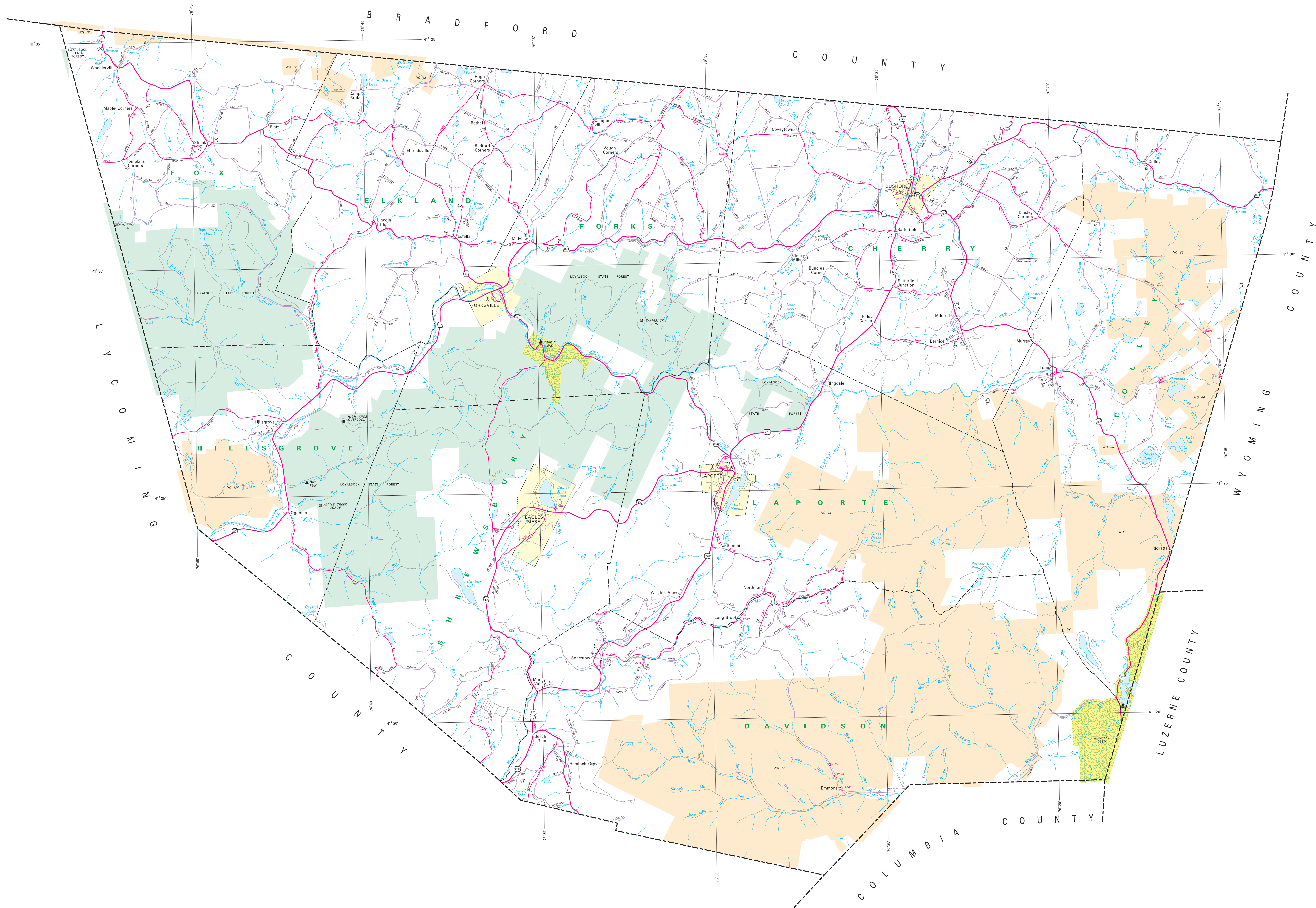
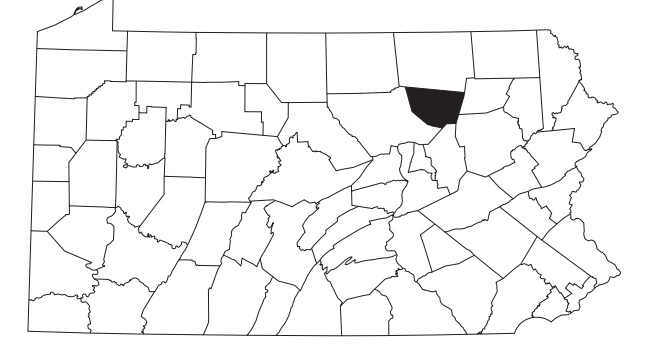
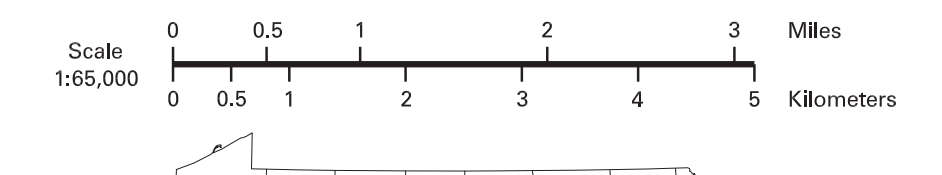


- LEGEND**
- FULLY CONTROLLED ACCESS HIGHWAY
 - MULTILANE HIGHWAY
 - TRUNK ROAD
 - REMAINING STATE ROAD AND EQUIPMENT
 - STATE MAINTAINED BRIDGE
 - TOWNSHIP ROAD
 - TOWNSHIP ROAD (PENDING IMPROVEMENT)
 - OTHER ROAD (UNIMPROVED)
 - INDUSTRIAL INTERCHANGE NUMBER
 - INTERSTATE TRAFFIC ROUTE
 - UNITED STATES TRAFFIC ROUTE
 - PENNSYLVANIA TRAFFIC ROUTE
 - RAILROAD BY SPACES
 - RAILROAD ABANDONED TRACK REMAINS
 - STATE LINE
 - COUNTY LINE
 - TOWNSHIP LINE
 - INCORPORATED CITY
 - INCORPORATED BOROUGH
 - STATE CAPITAL
 - COUNTY SEAT
 - OTHER COINCIDENTS
 - COLLEGE OF UNIVERSITY
 - STATE POLICE HEADQUARTERS
 - GENETIC
 - STATE ACKNOWLEDGED HISTORIC PROPERTY
 - FEDERAL STATE HISTORIC SITE
 - POWDER FACILITY
 - PORT OF BRIDGE
 - HORSE RACE TRACK
 - REPORT
 - STATE MARINA AND CONCRETE FACILITY
 - WOLLENGER CENTER AND CONCRETE FACILITY
 - STATE FISH HATCHERY
 - STATE FOREST PLANTING AREA
 - FEDERAL WILDLIFE SANCTUARY
 - STATE PARK LAND - HEADQUARTERS
 - STATE GOLF LAND AND NUMBER
 - STATE AND FEDERAL FOREST LAND
 - FEDERAL PARK, RECREATION LAND
 - FEDERAL RESERVATION



2023
GENERAL HIGHWAY MAP
SULLIVAN COUNTY
PENNSYLVANIA

PREPARED BY THE
PENNSYLVANIA DEPARTMENT OF TRANSPORTATION
BUREAU OF PLANNING AND RESEARCH
GEOGRAPHIC INFORMATION DIVISION
IN COOPERATION WITH THE
U.S. DEPARTMENT OF TRANSPORTATION
FEDERAL HIGHWAY ADMINISTRATION



POPULATION OF COUNTY (2020 Census) 1,600
AREA OF COUNTY (SQ. MI.) 279
(SQ. KM) 724
POLYCONIC PROJECTION - NAD 83 DATUM

COPIES OF THIS MAP ARE AVAILABLE AT NOMINAL COST
CONTACT:
PENNSYLVANIA DEPARTMENT OF TRANSPORTATION
SALES STAFF
PAUL BUCK, M.S.
HARRISBURG, PENNSYLVANIA 17105 - 2461
TELEPHONE (717) 787-6384

USERS NOTING ERRORS OR OMISSIONS ON THIS MAP
ARE URGED TO REPORT THEM TO:
PENNSYLVANIA DEPARTMENT OF TRANSPORTATION
BUREAU OF PLANNING & RESEARCH
GEOGRAPHIC INFORMATION DIVISION
P.O. BOX 305
HARRISBURG, PENNSYLVANIA 17105 - 3355

E-MAIL: mapcenter@pa.gov

COPYRIGHT © COMMONWEALTH OF PENNSYLVANIA
ALL RIGHTS RESERVED