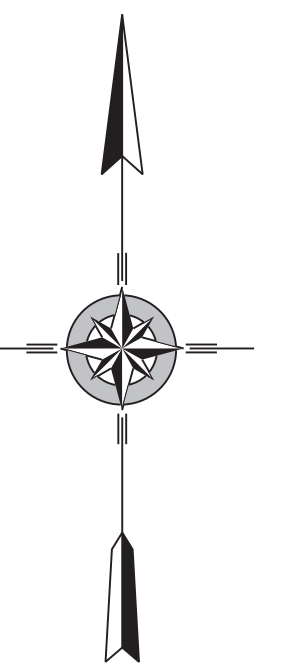
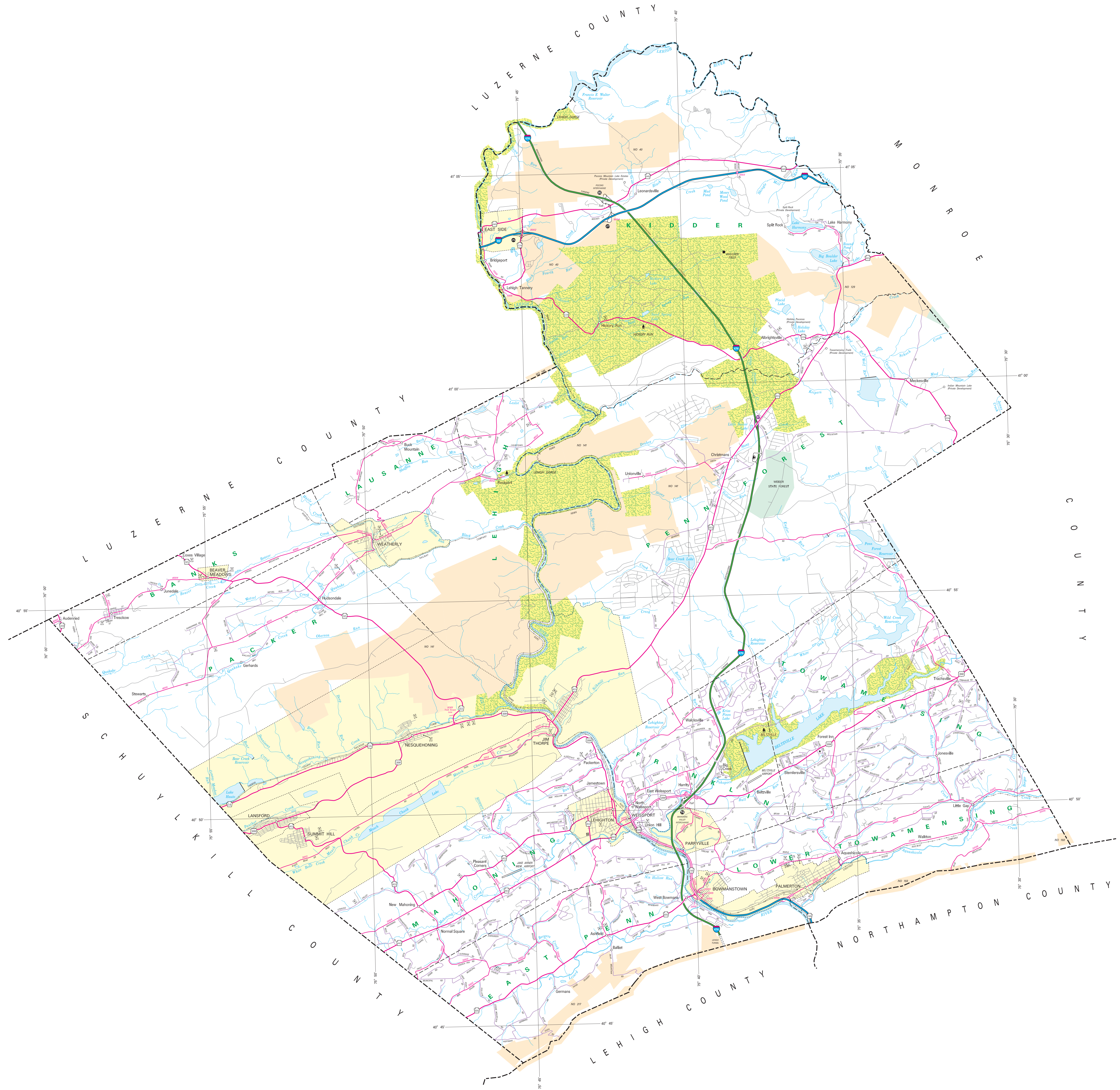
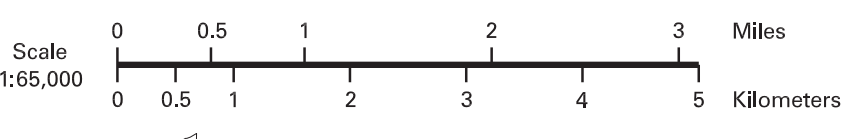


- LEGEND**
- FULLY CONTROLLED ACCESS HIGHWAY
 - MULTILANE HIGHWAY
 - THREE LANE
 - REMAINING STATE ROAD AND EVIDENCE
 - STATE MAINTAINED SPUR
 - TOWNSHIP ROAD
 - TOWNSHIP ROAD (PENDING IMPROVEMENT)
 - LOCAL ROAD
 - INDUSTRIAL BUSINESS CENTER
 - INDUSTRIAL TRAFFIC ROUTE
 - UNIMPROVED TRAFFIC ROUTE
 - PENNSYLVANIA TRAFFIC ROUTE
 - RAILROAD BY SPUR
 - RAILROAD ABANDONED TRACK REMAINS
 - STATE LINE
 - COUNTY LINE
 - TOWNSHIP LINE
 - INCORPORATED CITY
 - INCORPORATED BOROUGH
 - STATE CAPITAL
 - COUNTY SEAT
 - OTHER COMMUNITIES
 - CITY OF UNIVERSITY
 - STATE POLICE FACILITY
 - COURT
 - STATE MAINTAINED HISTORIC PROPERTY
 - FEDERAL STATE HISTORIC
 - POWELL FACILITY
 - PORT OF HARBOR
 - HORSE RACE TRACK
 - HELIPORT
 - RACE TRACK AND CONVENT FACILITY
 - WELDING CENTER AND CONVENT FACILITY
 - STATE FISH HATCHERY
 - STATE FOREST MEDICAL AREA
 - STATE FOREST TRAIL AREA
 - FEDERAL RECREATION SITE
 - STATE PARK LAND - HEADQUARTERS
 - STATE GAME LAND AND NUMBER
 - STATE AND FEDERAL FOREST LAND
 - FEDERAL PARK, RECREATION LAND
 - FEDERAL RECREATION
 - Highway "SLIP" MARKS EQUIPPED EXCLUSIVELY FOR THE E-ZPASS AUTOMATED TOLL COLLECTION SYSTEM



2023
GENERAL HIGHWAY MAP
CARBON COUNTY
PENNSYLVANIA

PREPARED BY THE
PENNSYLVANIA DEPARTMENT OF TRANSPORTATION
BUREAU OF PLANNING AND RESEARCH
GEOGRAPHIC INFORMATION DIVISION
IN COOPERATION WITH THE
U.S. DEPARTMENT OF TRANSPORTATION
FEDERAL HIGHWAY ADMINISTRATION



POPULATION OF COUNTY (2020 Census) 44,740
AREA OF COUNTY (SQ. MI.) 428
SQ. MILEAGE 428

COPIES OF THIS MAP ARE AVAILABLE AT NOMINAL COST
CONTACT
PENNSYLVANIA DEPARTMENT OF TRANSPORTATION
SALES STORE
P.O. BOX 480
HARRISBURG, PENNSYLVANIA 17109 - 3451
TELEPHONE: (717) 771-0746

USERS NOTING ERRORS OR OMISSIONS ON THIS MAP
ARE URGED TO REPORT THEM TO:
PENNSYLVANIA DEPARTMENT OF TRANSPORTATION
BUREAU OF PLANNING & RESEARCH
GEOGRAPHIC INFORMATION DIVISION
P.O. BOX 480
HARRISBURG, PENNSYLVANIA 17109 - 3456

E-MAIL: gis@pa.gov
COPYRIGHT © COMMONWEALTH OF PENNSYLVANIA
ALL RIGHTS RESERVED