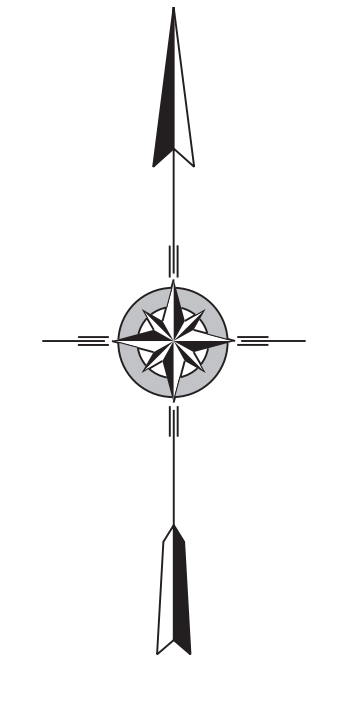
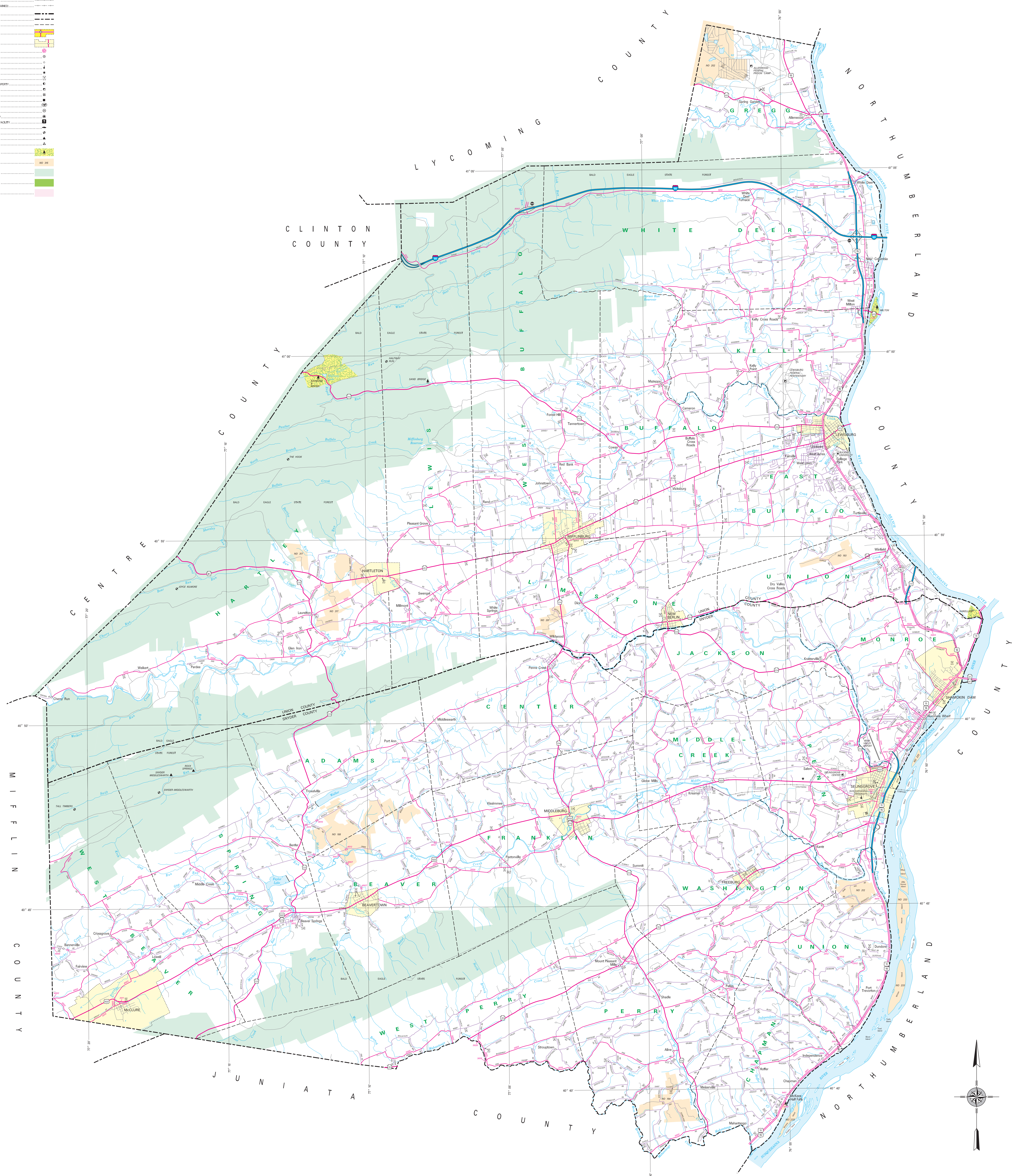
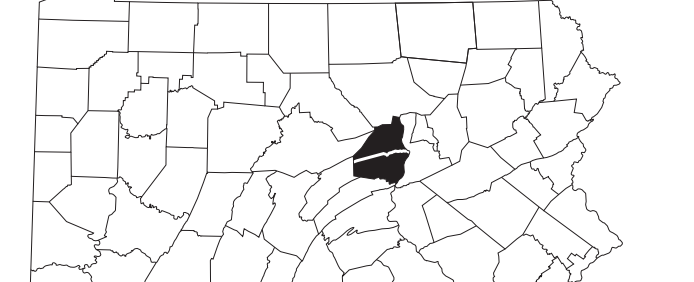
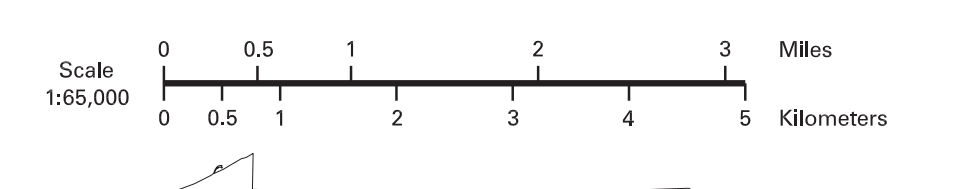


- LEGEND**
- FULLY CONTROLLED ACCESS HIGHWAY
  - MULTILANE HIGHWAY
  - TRUNK ROAD
  - REMAINING STATE ROAD AND HIGHWAYS
  - STATE MAINTAINED BRIDGE
  - TOWNSHIP ROAD
  - TOWNSHIP ROAD (PRESERVE UNIMPROVED)
  - UNIMPROVED ROAD
  - UNIMPROVED ROAD NUMBER
  - INTERSTATE TRAFFIC ROUTE
  - UNITED STATES TRAFFIC ROUTE
  - PENNSYLVANIA TRAFFIC ROUTE
  - RAILROAD (IN SERVICE)
  - RAILROAD (ABANDONED TRACK REMAINS)
  - STATE LINE
  - COUNTY LINE
  - TOWNSHIP LINE
  - INCORPORATED CITY
  - INCORPORATED BOROUGH
  - STATE CAPITAL
  - COUNTY SEAT
  - OTHER COMMUNITIES
  - COLLEGE OF UNIVERSITY
  - STATE POLICE FACILITY
  - CEMETERY
  - STATE ADMINISTERED HISTORIC PROPERTY
  - FEDERAL STATE HISTORIC
  - POWELL FACILITY
  - PORT OF HARBOR
  - HORSE RACE TRACK
  - HOSPITAL
  - REST AREA AND COMFORT FACILITY
  - WILDLIFE LODGE AND COMFORT FACILITY
  - STATE FISH MARKET
  - STATE FOREST (INDIVIDUAL AREA)
  - STATE FOREST (GENERAL AREA)
  - FEDERAL WILDLIFE REFUGES
  - STATE PARK LAND - HEADQUARTERS
  - STATE PARK LAND AND NUMBER
  - STATE AND FEDERAL FOREST LAND
  - FEDERAL PARK - RECREATION LAND
  - FEDERAL RESERVATION



2023  
GENERAL HIGHWAY MAP  
**SNYDER COUNTY**  
AND  
**UNION COUNTY**  
PENNSYLVANIA

PREPARED BY THE  
PENNSYLVANIA DEPARTMENT OF TRANSPORTATION  
BUREAU OF PLANNING AND RESEARCH  
GEOGRAPHIC INFORMATION DIVISION  
IN COOPERATION WITH THE  
U.S. DEPARTMENT OF TRANSPORTATION  
FEDERAL HIGHWAY ADMINISTRATION



SNYDER		UNION	
POPULATION OF COUNTY (2020 Census)	39,736	POPULATION OF COUNTY (2020 Census)	42,681
AREA OF COUNTY (SQ. MI.)	289	AREA OF COUNTY (SQ. MI.)	289
(SQ. KM.)	752	(SQ. KM.)	752

COPIES OF THIS MAP ARE AVAILABLE AT NOMINAL COST  
CONTACT:  
PENNSYLVANIA DEPARTMENT OF TRANSPORTATION  
SALES STORE  
3400 STATE ST.  
HARRISBURG, PENNSYLVANIA 17104 - 2463  
TELEPHONE: (717) 787-8766

USERS NOTING ERRORS OR OMISSIONS ON THIS MAP  
ARE URGED TO REPORT THEM TO:  
PENNSYLVANIA DEPARTMENT OF TRANSPORTATION  
BUREAU OF PLANNING AND RESEARCH  
GEOGRAPHIC INFORMATION DIVISION  
P.O. BOX 3000  
HARRISBURG, PENNSYLVANIA 17105 - 2005  
E-MAIL: [mapinfo@dot.state.pa.us](mailto:mapinfo@dot.state.pa.us)

COPYRIGHT © COMMONWEALTH OF PENNSYLVANIA  
ALL RIGHTS RESERVED

