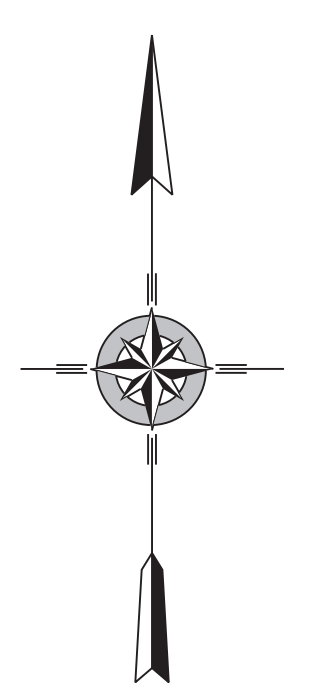
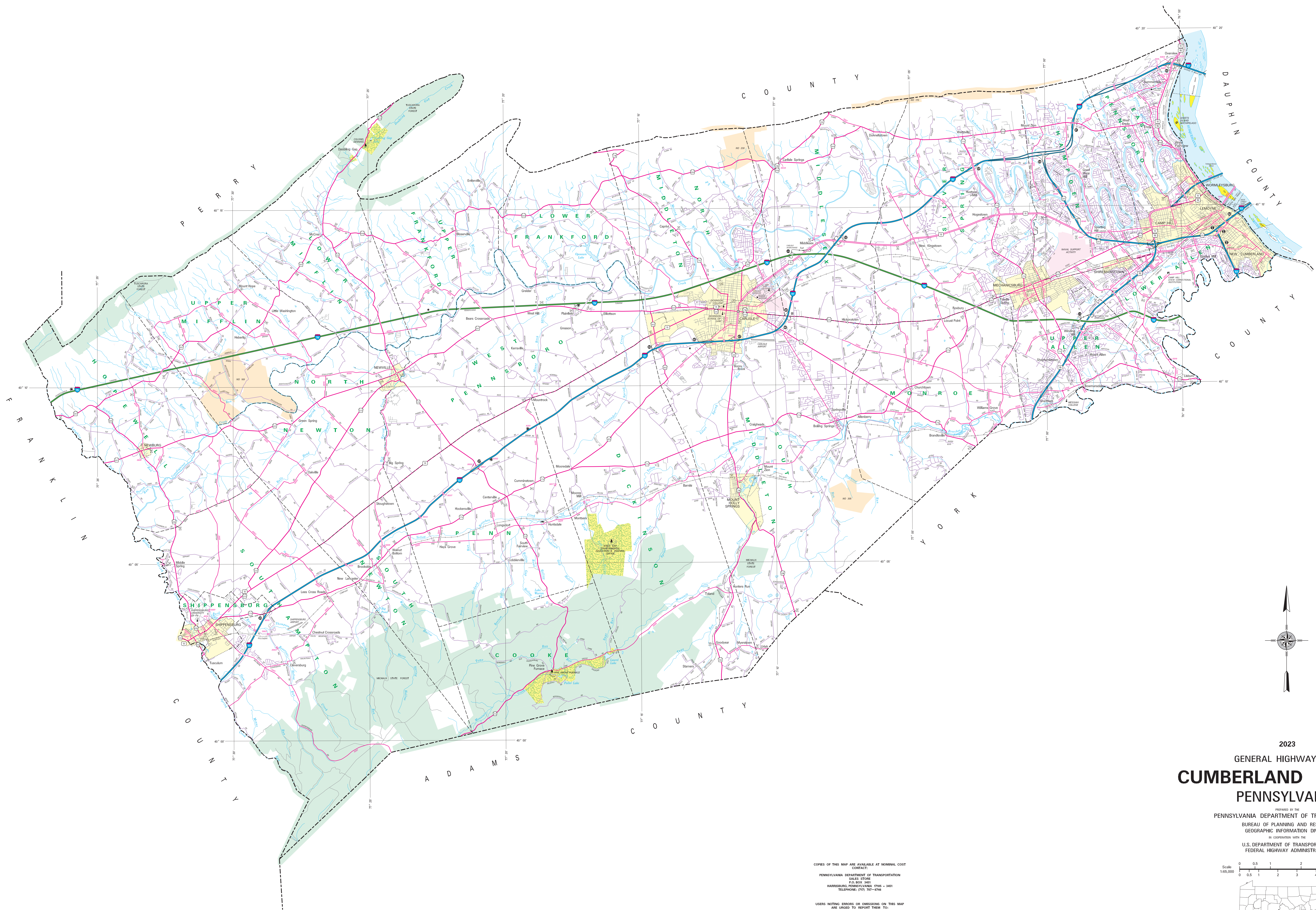
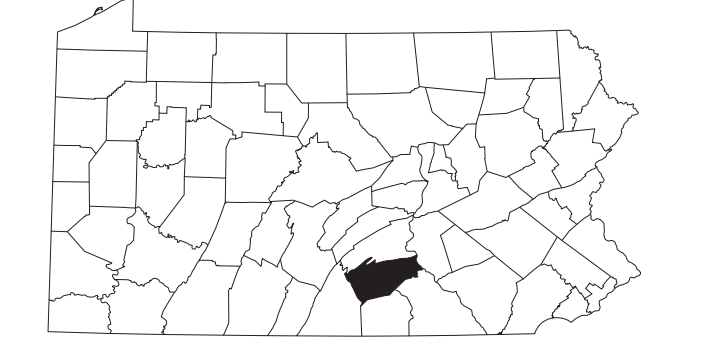


- LEGEND**
- FULLY CONTROLLED ACCESS HIGHWAY
  - MULTI-LANE HIGHWAY
  - THREE LANE HIGHWAY
  - REMAINING STATE ROAD AND CENTERLINE
  - STATE MAINTAINED BRIDGE
  - TOWNSHIP ROAD
  - TOWNSHIP ROAD (PRIVATE UNIMPROVED)
  - STATE ROAD (PRIVATE UNIMPROVED)
  - STATE ROAD INTERSECTION NUMBER
  - INTERSTATE TRAVEL ROUTE
  - UNITED STATES TRAVEL ROUTE
  - PENNSYLVANIA TRAVEL ROUTE
  - RAILROAD BY SERVICE
  - RAILROAD ABANDONED TRACK REMAINS
  - STATE LINE
  - COUNTY LINE
  - TOWNSHIP LINE
  - INCORPORATED CITY
  - INCORPORATED BOROUGH
  - STATE CAPITAL
  - COUNTY SEAT
  - OTHER GOVERNMENTS
  - COLLEGE OR UNIVERSITY
  - STATE POLICE FACILITY
  - CEMETERY
  - STATE ADMINISTERED HISTORIC PROPERTY
  - FEDERAL STATE INSTITUTION
  - POWERS OF SERVICE
  - HORSE RACE TRACK
  - REARPORT
  - REAR AREA AND COMFORT FACILITY
  - WELCOME CENTER AND COMFORT FACILITY
  - STATE FISH WARDEN
  - STATE FOREST MEDICAL AREA
  - STATE FOREST POND AREA
  - FEDERAL WILDLIFE REFUGES
  - STATE PARK LAND - HEADQUARTERS
  - STATE GAME LAND AND HUNTERS
  - STATE AND FEDERAL FOREST LAND
  - FEDERAL PARK - RECREATION LAND
  - FEDERAL RESERVATION



2023  
GENERAL HIGHWAY MAP  
**CUMBERLAND COUNTY**  
PENNSYLVANIA

PREPARED BY THE  
PENNSYLVANIA DEPARTMENT OF TRANSPORTATION  
BUREAU OF PLANNING AND RESEARCH  
GEOGRAPHIC INFORMATION DIVISION  
IN COOPERATION WITH THE  
U.S. DEPARTMENT OF TRANSPORTATION  
FEDERAL HIGHWAY ADMINISTRATION



POPULATION OF COUNTY 1820 Census 1,200,000  
AREA OF COUNTY (SQ. MI.) 1,255  
(SQ. MI.) 1,257  
POLYCONIC PROJECTION - NAD 83 DATUM

COPIES OF THIS MAP ARE AVAILABLE AT NOMINAL COST  
CONTACT:  
PENNSYLVANIA DEPARTMENT OF TRANSPORTATION  
SALES STORE  
P.O. BOX 1465  
HARRISBURG, PENNSYLVANIA 17105 - 3451  
TELEPHONE: (717) 767-0246

USERS NOTIFY ERRORS OR OMISSIONS ON THIS MAP  
AND SEND TO REPORT THEM TO:  
PENNSYLVANIA DEPARTMENT OF TRANSPORTATION  
BUREAU OF PLANNING & RESEARCH  
GEOGRAPHIC INFORMATION DIVISION  
P.O. BOX 1465  
HARRISBURG, PENNSYLVANIA 17105 - 3455  
E-MAIL: [maperrors@dot.state.pa.us](mailto:maperrors@dot.state.pa.us)

COPYRIGHT © COMMONWEALTH OF PENNSYLVANIA  
ALL RIGHTS RESERVED