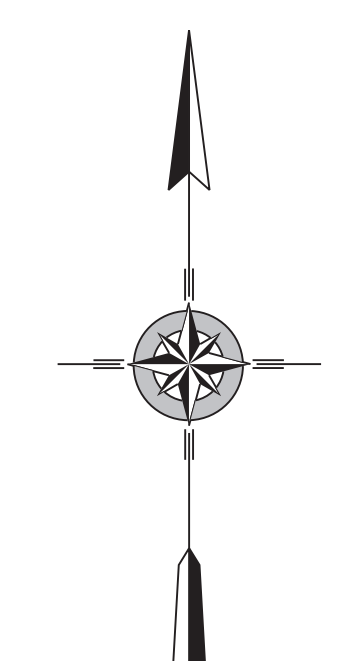
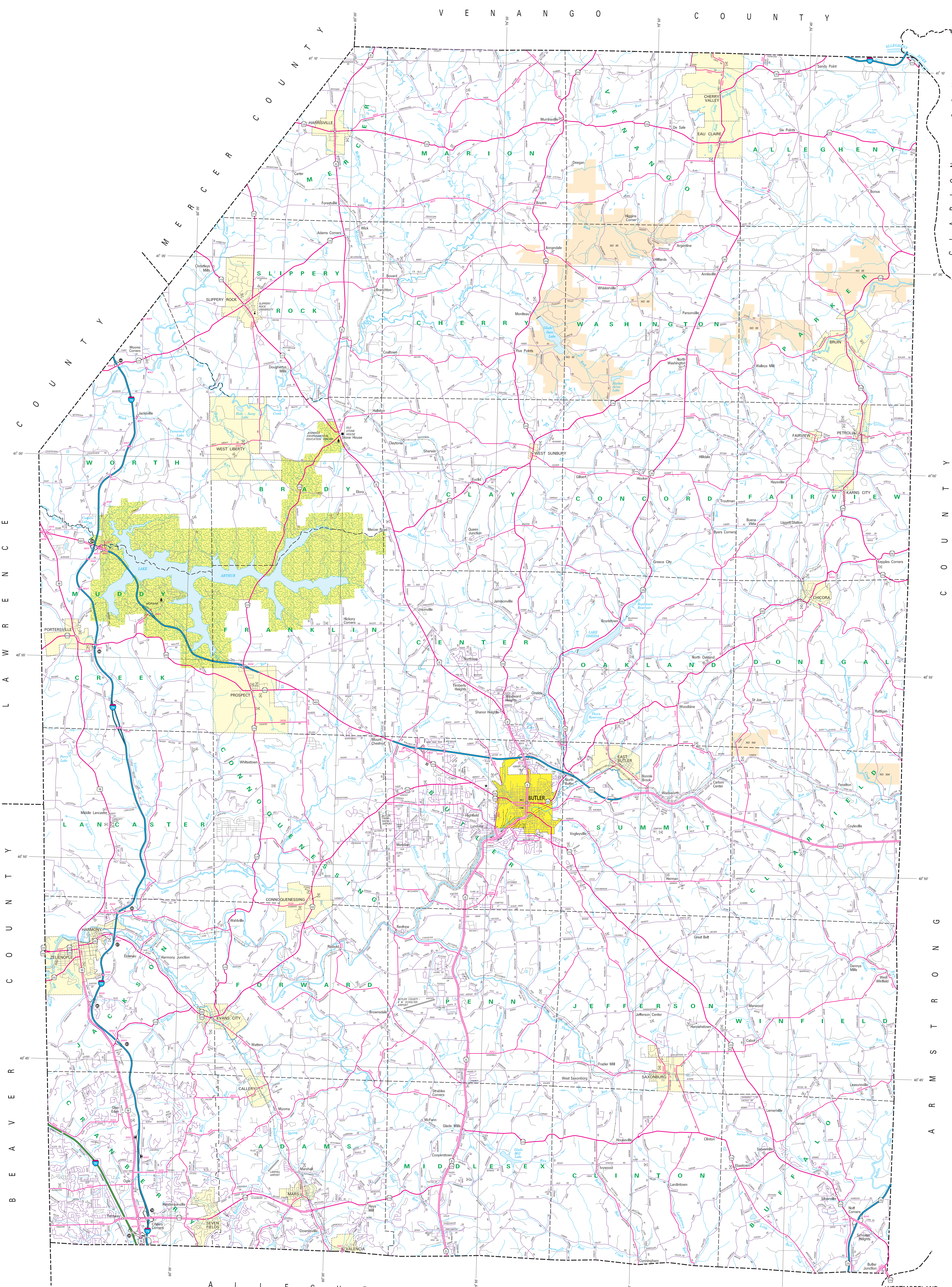
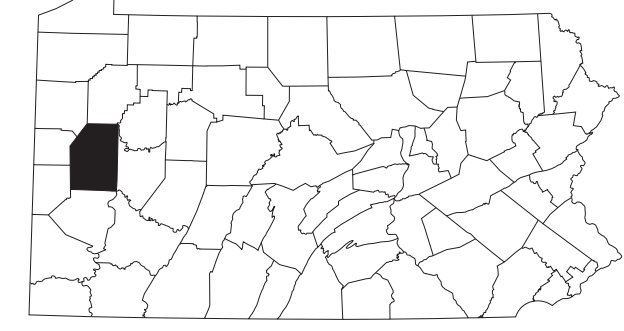
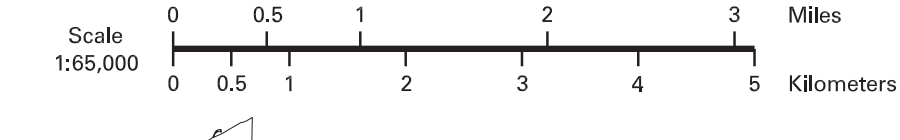


- LEGEND**
- FULLY CONTROLLED ACCESS HIGHWAY
  - MULTILANE HIGHWAY
  - TRUNK ROUTE
  - REMAINING STATE ROAD AND ELEVATION
  - STATE MAINTAINED BRIDGE
  - TOWNSHIP ROAD
  - TOWNSHIP ROAD (PENDING IMPROVEMENT)
  - OTHER ROAD
  - INTERSTATE HIGHWAY NUMBER
  - INTERSTATE TRAFFIC ROUTE
  - UNITED STATES TRAFFIC ROUTE
  - PENNSYLVANIA TRAFFIC ROUTE
  - RAILROAD (IN SERVICE)
  - RAILROAD (ABANDONED TRACK RETAINED)
  - STATE LINE
  - COUNTY LINE
  - TOWNSHIP LINE
  - INCORPORATED CITY
  - INCORPORATED BOROUGH
  - STATE CAPITAL
  - COUNTY SEAT
  - OTHER GOVERNMENT
  - COURSE OF UNIVERSITY
  - STATE POLICE FACILITY
  - CEMETERY
  - SPECIAL ADVERTISED HISTORIC PROPERTY
  - FEDERAL STATE HISTORIC
  - POWERS OF HISTORY
  - HORSE RACE TRACK
  - RECREATION
  - RECREATION AND COMFORT FACILITY
  - WILDLIFE LODGE AND COMFORT FACILITY
  - STATE FISH AND BOAT HARBOR
  - STATE FOREST WILDLIFE AREA
  - STATE FOREST TRAIL AREA
  - FEDERAL WILDLIFE SANCTUARY
  - STATE PARK LAND (HEADQUARTERS)
  - STATE GAME LAND AND NUMBER
  - STATE AND FEDERAL FOREST LAND
  - FEDERAL PARK RECREATION LAND
  - FEDERAL RESERVATION



2023  
**GENERAL HIGHWAY MAP**  
**BUTLER COUNTY**  
**PENNSYLVANIA**

PREPARED BY THE  
**PENNSYLVANIA DEPARTMENT OF TRANSPORTATION**  
 BUREAU OF PLANNING AND RESEARCH  
 GEOGRAPHIC INFORMATION DIVISION  
 BY COOPERATION WITH THE  
 U.S. DEPARTMENT OF TRANSPORTATION  
 FEDERAL HIGHWAY ADMINISTRATION



POPULATION OF COUNTY (2020 Census).....163,713  
 AREA OF COUNTY (SQ. MI.).....796  
 1950, 1960, 1970, 1980, 1990, 2000, 2010, 2020  
 POLYCONIC PROJECTION - NAD 83 DATUM



COPIES OF THIS MAP ARE AVAILABLE AT NOMINAL COST  
 CONTACT:  
 PENNSYLVANIA DEPARTMENT OF TRANSPORTATION  
 SALES STAFF  
 P.O. BOX 3463  
 HARRISBURG, PENNSYLVANIA 17105-3463  
 TELEPHONE: (717) 767-4246

USERS NOTING ERRORS OR OMISSIONS ON THIS MAP  
 ARE URGED TO REPORT THEM TO:  
 PENNSYLVANIA DEPARTMENT OF TRANSPORTATION  
 BUREAU OF PLANNING & RESEARCH  
 GEOGRAPHIC INFORMATION DIVISION  
 P.O. BOX 3050  
 HARRISBURG, PENNSYLVANIA 17105-3050  
 E-MAIL: [geomap@pa.gov](mailto:geomap@pa.gov)

PRINTED ON RECYCLED PAPER  
 ALL RIGHTS RESERVED