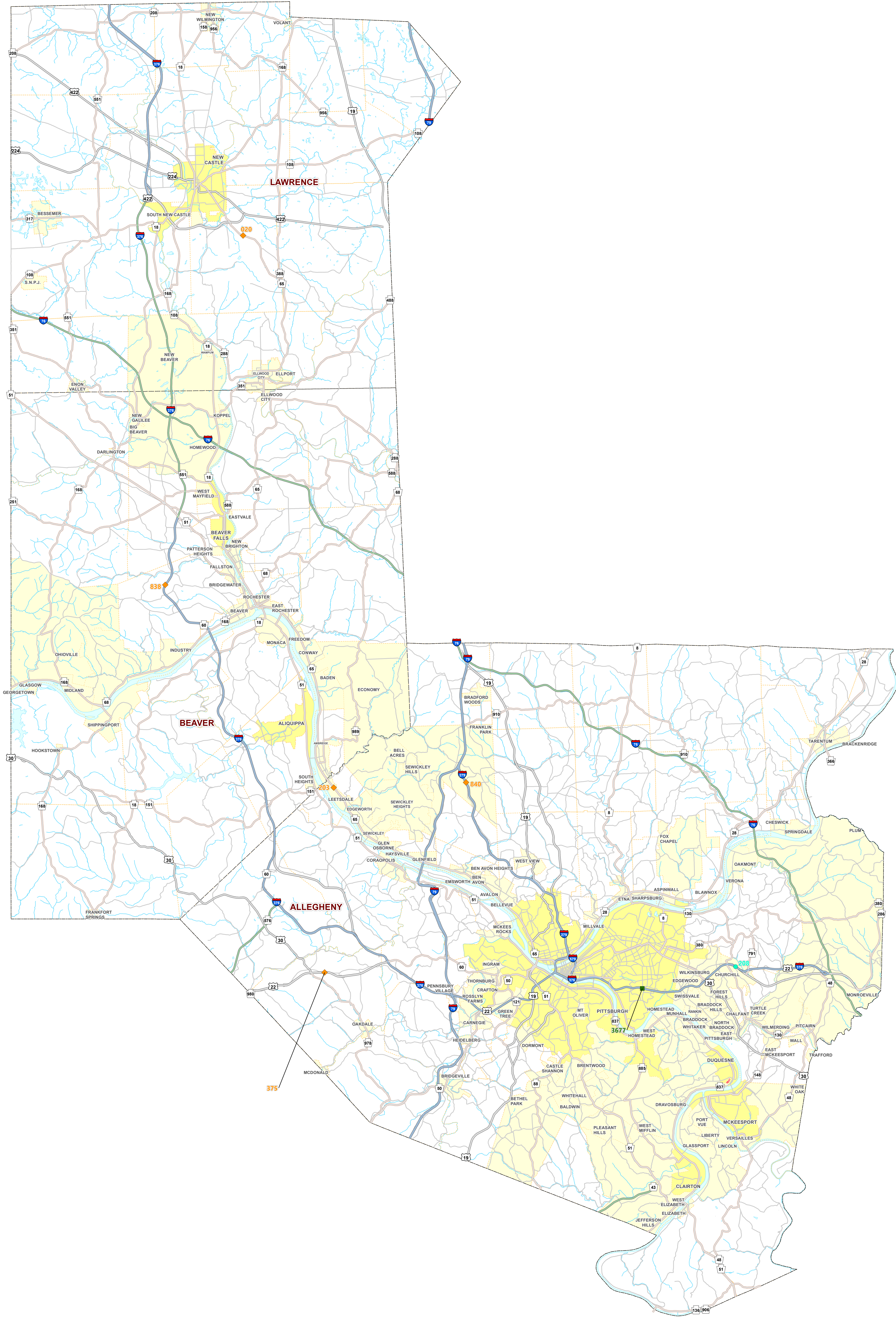
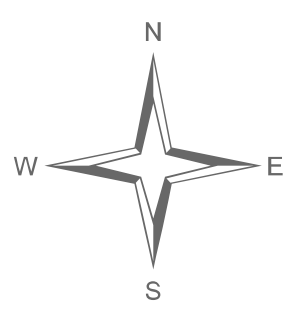


11 PERMANENT SITE MAP



TMS Map Legend	
Permanent	Portable
ATR	Machine Class
CAVC	Manual Class
Inactive	Volume
STIP	AI Machine Class
WIM	

This map is for reference purposes only. The information is provided "as is" without warranty of any kind, either expressed or implied. Information could include technical inaccuracies or errors of omission. Likewise PennDOT makes no warranty with respect to road information, including its quality, merchantability, or fitness for a particular purpose.

PennDOT Permanent Traffic Count Locations and Station Information

DISTRICT	SITE	TMS SITE NO	COUNTY	ROUTE NUMBER	SEGMENT	OFFSET	TRAVEL DIRECTION	LOCATION DESCRIPTION	SITE TYPE	EQUIPMENT	TELEMETRY	POWER SOURCE	ACTIVATION DATE	SITE COORDINATES
District: 11 ATR														
11	ATR - 208	101	02	0376	0794	1442	E	0.7 mi W of PA 791 (Monroeville)	ATR	MW - Microwave Sensor	Operational	AC	NOV 2017	40.4437481518813,-79.8404631169325
11	ATR - 208	101	02	0376	0795	1297	W	0.7 mi W of PA 791 (Monroeville)	ATR	MW - Microwave Sensor	Operational	AC	NOV 2017	40.4439831286857,-79.8406900158766
ATR Total: 1														
CAVC														
11	CAVC - 020	2919	37	0065	0260	3336	B	.6 MI S OF US 422 (NEW CASTLE)	CAVC	DL - Double Loop Sensor P2 - Piezoelectric Sensor (AXLE)	Operational	AC	JUN 2009 JUN 2009	40.9627782747455,-80.3016401812141
11	CAVC - 020	2919	37	0065	0281	0000	S	.6 MI S OF US 422 (NEW CASTLE)	CAVC	DL - Double Loop Sensor P2 - Piezoelectric Sensor (AXLE)	Operational	AC	JUN 2009 JUN 2009	40.9696410617017,-80.3124728825132
11	CAVC - 203	78	02	0065	0270	0000	N	0.6 mi. S of Beaver County Line (Leetsdale)	CAVC	DL - Double Loop Sensor P2 - Piezoelectric Sensor (AXLE)	Operational	Solar	MAY 2013 SEP 2015	40.5712818148009,-80.2166880663543
11	CAVC - 203	78	02	0065	0271	0000	S	0.6 mi. S of Beaver County Line (Leetsdale)	CAVC	DL - Double Loop Sensor P2 - Piezoelectric Sensor (AXLE)	Operational	Solar	MAY 2013 SEP 2015	40.5712199317507,-80.2167764578937
11	CAVC - 375	51	02	0022	0080	0000	E	.8 MI E OF PA 978 (IMPERIAL) on SR 22.	CAVC	DL - Double Loop Sensor P2 - Piezoelectric Sensor (AXLE)	Operational	Solar	DEC 2016 DEC 2016	40.4395907609556,-80.2252508198692
11	CAVC - 375	51	02	0022	0081	0000	W	.8 MI E OF PA 978 (IMPERIAL) on SR 22.	CAVC	DL - Double Loop Sensor P2 - Piezoelectric Sensor (AXLE)	Operational	Solar	DEC 2016 DEC 2016	40.439665177263,-80.2267078751124
11	CAVC - 838	293	04	0376	0344	1568	E	approximately 1.2 mi. W of PA 4035 (I-376 Exit 36 - Brighton)	CAVC	DL - Double Loop Sensor P2 - Piezoelectric Sensor (AXLE)	Operational	Solar	SEP 2019 SEP 2019	40.715289658976,-80.3744746228211
11	CAVC - 838	293	04	0376	0345	1481	W	approximately 1.2 mi. W of PA 4035 (I-376 Exit 36 - Brighton)	CAVC	DL - Double Loop Sensor P2 - Piezoelectric Sensor (AXLE)	Operational	Solar	SEP 2019 SEP 2019	40.7152905937596,-80.3741307442942
11	CAVC - 840	96	02	0279	0122	1267	N	1.0 mi. S of I-79	CAVC	DL - Double Loop Sensor P2 - Piezoelectric Sensor (AXLE)	Operational	Solar	NOV 2017 NOV 2017	40.5749945939437,-80.0928016565435
11	CAVC - 840	96	02	0279	0123	1158	S	1.0 mi. S of I-79	CAVC	DL - Double Loop Sensor P2 - Piezoelectric Sensor (AXLE)	Operational	Solar	NOV 2017 NOV 2017	40.5745826207139,-80.0929760182722
CAVC Total: 5														
INACTIVE														
11	INACTIVE - 707	79	02	0079	0520	0275	N	0.25 mi. south of PA-50 interchange	INACTIVE	DL - Double Loop Sensor PQ - Quartz Piezoelectric Sensor	Operational	AC	NOV 2017 SEP 1998	40.3483099276773,-80.1175697026118
11	INACTIVE - 707	79	02	0079	0521	0225	S	0.25 mi. south of PA-50 interchange	INACTIVE	DL - Double Loop Sensor PQ - Quartz Piezoelectric Sensor	Operational	AC	NOV 2017 SEP 1998	40.3482990685312,-80.1179320212368
INACTI Total: 1														
STIP														
11	STIP - 3677	3677	02	0376	0744	0554	E	West entrance of Squirrel Hill Tunnel	STIP	DL - Double Loop Sensor	Incapable of power/phone hook-up	N/A	MAY 2005	40.4282083420936,-79.9277806930352
11	STIP - 3677	3677	02	0376	0745	0532	W	West entrance of Squirrel Hill Tunnel	STIP	DL - Double Loop Sensor	Incapable of power/phone hook-up	N/A	MAY 2005	40.4283740637726,-79.9277247833292
STIP Total: 1														
District Total: 8														