

PURSUITS MAGAZINE

pursuits

Additional hiking/biking trail information is available from Department of Conservation and Natural Resources at http://www.dcnr.state.pa.us/greenway_trails.aspx

Pennsylvania Pursuits
Pursuits is a free seasonal publication that highlights unique attributes of the Keystone State. In pursuit of life, liberty and happiness in travel, the publication allows readers to experience some of Pennsylvania's best roadtrips, outdoor escapes, festivals, off-the-beaten-path small towns, big-city adventures and more.

pursuits

Order today at visitPA.com or call 800-VISIT-PA

ARTISAN TRAILS

Art, culture and great experiences await you along Pennsylvania's Artisan Trails! Grab your camera, hop in the car, and head down the highway.

PAArtisanTrails.com

GOLF IN PA

PA has some of the best golfing in the country. So whether you're an 18 (plus a stroke or two) or a pro, we've got the course just for you.

goToPA.com

EXPLORE PA TRAILS

Follow a trail to a new adventure. Thousands of miles await your discovery. Search, view, map and share information on thousands of miles of outdoor recreation trails, featured trails, and trail-related events. Explore trails near you!

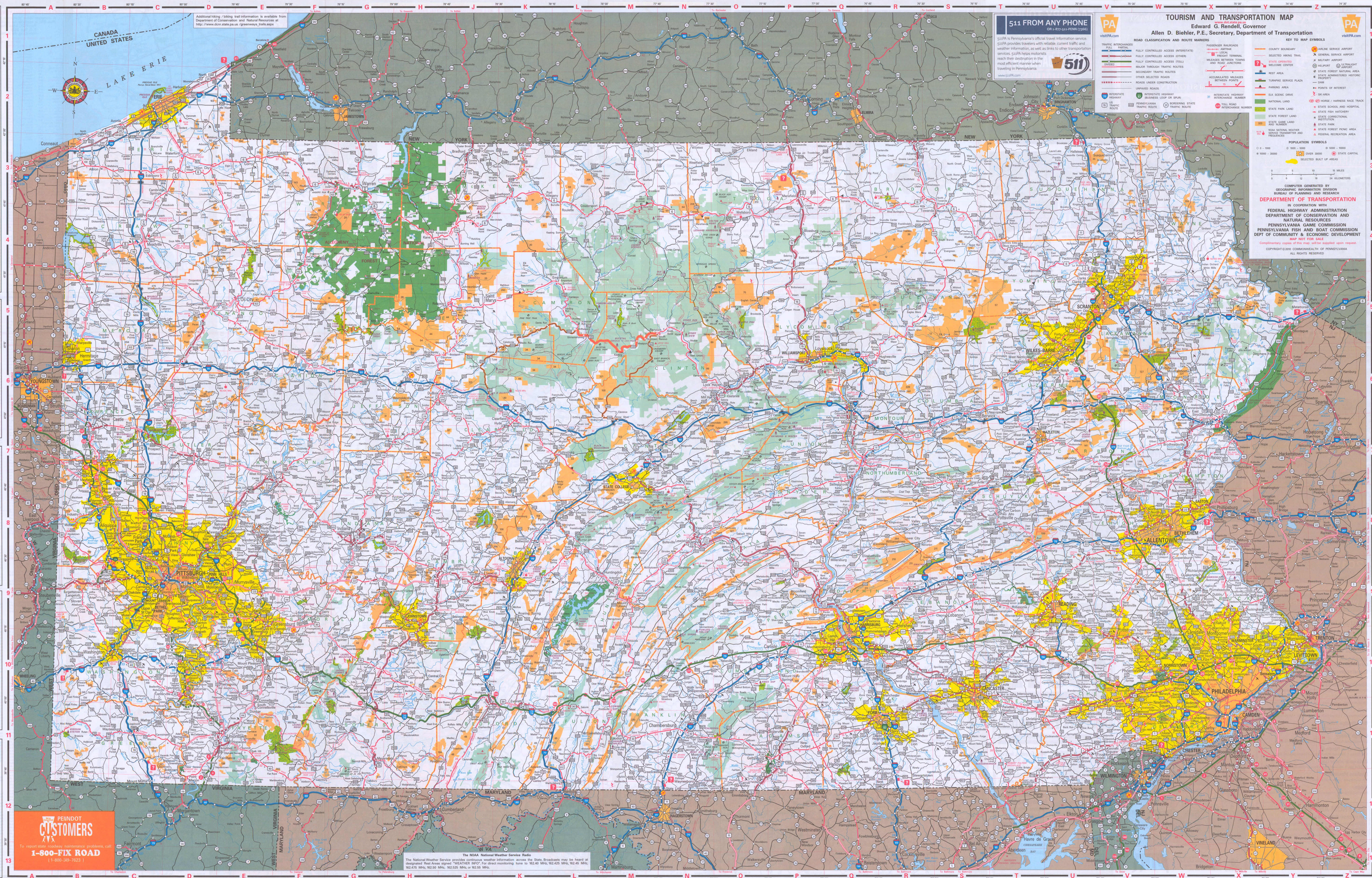
ExplorePATrails.com

SKI PA

Great lodging, fabulous dining and amazing views. Enjoy skiing, snowboarding, tubing and cross-country. Visit our website for great Ski-in-Stay Packages!

PENNSYLVANIA SKI AREAS ASSOCIATION

570-443-0963
www.skippa.com



511 FROM ANY PHONE
OR 1-877-511-PENN (7369)

511PA is Pennsylvania's official travel information service. 511PA provides travelers with reliable current traffic and weather information, as well as links to other transportation services. 511PA helps motorists reach their destination in the most efficient manner when traveling in Pennsylvania.

www.511PA.com

TOURISM AND TRANSPORTATION MAP
Edward G. Rendell, Governor
Allen D. Biehler, P.E., Secretary, Department of Transportation

ROAD CLASSIFICATION AND ROUTE MARKERS

- THRUWAY INTERCHANGES
- THRUWAY
- FULLY CONTROLLED ACCESS INTERSTATES
- FULLY CONTROLLED ACCESS OTHERS
- FULLY CONTROLLED ACCESS TOLLS
- MAJOR THROUGH TRAFFIC ROUTES
- SECONDARY TRAFFIC ROUTES
- OTHER SELECTED ROADS
- ROADS UNDER CONSTRUCTION
- UNPAVED ROADS
- CRACKED ASPHALT
- CRACKED ASPHALT BUSINESS LOOP OR SPUR
- PENNSYLVANIA TRAFFIC ROUTE
- INTERSTATE
- STATE HIGHWAY
- STATE ROAD
- STATE TRAFFIC ROUTE
- LOCAL TRAFFIC ROUTE
- MEADOWS BETWEEN TOWNS AND TRAIL ANCHORS
- ACCUMULATED MILEAGES BETWEEN POINTS
- INTERSTATE HIGHWAY INTERCHANGE NUMBER
- TOLL ROAD INTERCHANGE NUMBER

KEY TO MAP SYMBOLS

- COUNTY BOUNDARY
- COUNTY SERVICE ROAD
- SELECTED BRIDGE
- STATE OPERATED WELCOME CENTER
- REST AREA
- TUNNEL SERVICE PLAZA
- PARKING AREA
- PA SCenic DRIVE
- NATIONAL LAND
- STATE PARK LAND
- STATE FOREST LAND AND NUMBER
- STATE GAME LAND
- PA NATIONAL HEALTH SERVICES TRANSFER AND RESOURCES
- AIRLINE SERVICE AIRPORT
- GENERAL AIRPORT
- MILITARY AIRPORT
- UNLIT AIRPORT
- STATE FOREST NATURAL AREA
- STATE COMMERCE HISTORIC PROPERTY
- POINTS OF INTEREST
- STATE SCHOOL
- STATE FISH HATCHERY
- STATE CONSTRUCTION STATION
- STATE PARK
- STATE FOREST PICNIC AREA
- FEDERAL RECREATION AREA

POPULATION SYMBOLS

- 0 - 1000
- 1000 - 3000
- 3000 - 10000
- 10000 - 50000
- 50000 - 100000
- 100000 - 500000
- 500000 - 1000000
- SELECTED BUILT UP AREAS

COMPUTER GENERATED BY
GEOGRAPHIC INFORMATION DIVISION
BUREAU OF PLANNING AND RESEARCH
DEPARTMENT OF TRANSPORTATION
IN COOPERATION WITH
FEDERAL HIGHWAY ADMINISTRATION
DEPARTMENT OF CONSERVATION AND NATURAL RESOURCES
PENNSYLVANIA GAME COMMISSION
PENNSYLVANIA FISH AND BOAT COMMISSION
DEPT OF COMMUNITY & ECONOMIC DEVELOPMENT
MAP NOT FOR SALE
Complementary copies of this map will be supplied upon request.
COPYRIGHT © 2005 COMMONWEALTH OF PENNSYLVANIA
ALL RIGHTS RESERVED.

PEINDOT CUSTOMERS

To report state-wide emergency problems, call
1-800-FIX ROAD
(1-800-349-1623)

The NOAA National Weather Service Radio
The NOAA National Weather Service Radio provides continuous weather information across the State. Broadcasts may be heard at designated Rest Areas signed "WEATHER INFO". For direct monitoring tune to 162.40 MHz, 162.425 MHz, 162.475 MHz, 162.50 MHz, 162.525 MHz or 162.55 MHz.