

## New Developments

### New Permanent Continuous Automatic Vehicle Classification (CAVC) Site Installations

Six new CAVC sites were installed in the 2016 calendar year. All six sites were installed to collect classification data in all lanes of travel. A list of the six sites are below, showing their location and when the site began collecting data.

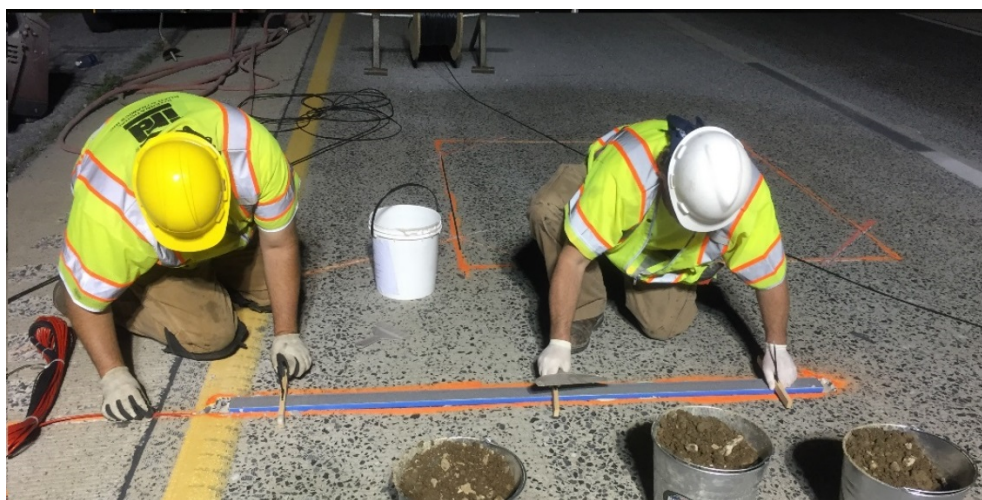
- CAVC 821 - US 15 in Lawrence Township, Tioga County, began in May.
- CAVC 824 - PA 100 in Uwchlan Township, Chester County started in March.
- CAVC 828 - I-79 in Vernon Township, Crawford County, began in September.
- CAVC 829 - I-80 in Shenango Township, Mercer County started in October
- CAVC 832 - I-176 in Robeson Township, Berks County began in November.
- CAVC 833 - I-81 in East Pennsboro Township, Cumberland County started in December.

### Virtual Weigh-In-Motion (VWIM) Site Upgrades

The permanent site 317, located on I-99 in Freedom Township, Blair County was upgraded in June. The site now utilizes a camera to capture images of every truck passing over the sensors in the northbound direction. The permanent site 501, located on US 15 in Liberty Township, Tioga County, was also upgraded in June. The site captures images of every truck passing over the sensors in the both directions. The images can be remotely accessed at these sites by either PennDOT or the Pennsylvania State Police. The systems are used by PennDOT to collect traffic and weight data and by the State Police as a screening tool for weight enforcement as part of an agreement between the two departments.

### New Virtual Weigh-In-Motion (VWIM) Site Installations

Four new VWIM sites were installed in the 2016 calendar year. Sites 701 and 702, both located in East Hanover Township, Dauphin County on I-81 began collecting data in July and November respectively. Site 701 captures images in the northbound direction while site 702 captures images in the southbound direction. Site 703, located on US 222 in Brecknock Township, Lancaster County takes images in both directions and began collecting data in July. Site 704, located on I-70 in Bethel Township, Fulton County captures images in the westbound direction only and began collecting data in July.



Installation of WIM 701 in Dauphin County